

HELPING PEOPLE STAY HEALTHY  
與民攜手 保健安康

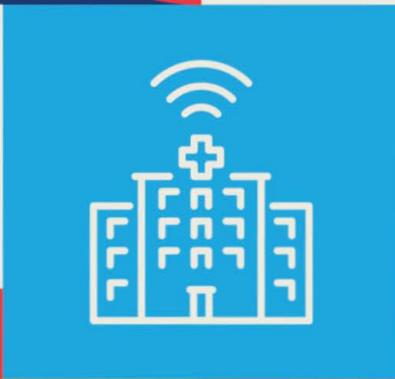
2026

# HOSPITAL AUTHORITY CONVENTION 11-13 MAY

## 醫院管理局研討大會



PROFESSIONAL SERVICE  
專業為本



HONG KONG CONVENTION & EXHIBITION CENTRE  
香港會議展覽中心



TEAMWORK  
群策群力



PEOPLE-CENTRED CARE  
以人為先



COMMITTED STAFF  
敬業樂業



www.ha.org.hk/haconvention/hac2026  
2300 7984 2890 7726 hac@ha.org.hk



## Message from Chief Secretary for Administration

The Government of the Hong Kong Special Administrative Region  
The People's Republic of China

It gives me great pleasure to welcome you to the Hospital Authority (HA) Convention 2026.

The Convention has been a flagship platform connecting ideas, knowledge and experience among healthcare leaders and practitioners from Hong Kong, the Mainland, Asia and around the world since 1993. We gather not just to share knowledge, but to innovate and to reaffirm our shared mission of better healthcare for all.

Hong Kong is well known for its efficient public healthcare system and high-quality healthcare professionals. Since 2022, the current-term Government has been driving policies and initiatives to enhance the sustainability of our healthcare system, and develop Hong Kong into an international health and medical innovation hub. The HA, delivering about 90 per cent of our city's healthcare services, is at the heart of this transformation.

This January, the HA implemented the fees and charges reform for public healthcare, guiding the public to make optimal use of healthcare resources, reducing wastage and abuse, and enhancing healthcare protection for those who need it most: the poor, the acute, the serious, the critical.

The HA has made impressive progress in the accreditation of public hospitals and the establishment of chest pain centres and stroke centres under national standards. Five public hospitals have been accredited or are on the road to accreditation. With more public hospitals to be accredited in the coming years, the HA is contributing to the internationalisation of China's national hospital accreditation standards, thus improving the overall healthcare quality and benchmarks in the Greater Bay Area (GBA).

The HA is also committed to driving forward digital innovation and transformation. The development of "Smart Hospitals" and "Smart Care" enhances operational efficiency, clinical quality and patient experience. The HA is also actively leveraging artificial intelligence (AI) technologies to assist in diagnosis, encompassing image analysis and predictive modelling, and progressively expanding its use to include generative AI solutions for further enhancement of healthcare service quality and efficiency. As we embrace innovation, we remain committed to a simple principle: technology should serve people – patients, carers and healthcare workers alike.

Looking ahead, the HKSAR Government is proactively aligning with the National 15<sup>th</sup> Five-Year Plan announced earlier this year. We are drawing up a comprehensive, strategic and forward-looking Hong Kong five-year plan, and will play a greater role in the country's opening up to the world. On the medical and healthcare front, the HA will fully capitalise on its unique advantages: strong collaboration and networking with the Mainland, and close connection to the world, to foster healthcare co-operation in the GBA and advance the strategy of "Healthy China".

Over these three days, you will explore advanced technologies, exchange transformative insights and build lasting connections. I am confident that you will find the sessions stimulating, the discussions practical and open, and the connections truly rewarding.

I wish the Convention every success and our guests a wonderful stay in Hong Kong.

**Mr CHAN Kwok-ki**

Chief Secretary for Administration  
The Government of the Hong Kong Special Administrative Region  
The People's Republic of China



## Message from Secretary for Health

**The Government of the Hong Kong Special Administrative Region  
The People's Republic of China**

**On** behalf of the Health Bureau of the Government of the Hong Kong Special Administration Region (HKSAR), I am delighted to welcome you all to the Hospital Authority (HA) Convention 2026.

Hong Kong boasts world-leading health indicators, thanks to our high-quality healthcare professionals and efficient healthcare system. We have one of the longest life expectancies and lowest infant mortality rates globally. Serving as the public healthcare safety net for all, the HA is committed to providing professional and efficient universal health coverage for all citizens in Hong Kong. Yet we do not rest on our laurels – especially when we face the challenges of an ageing society and the rising prevalence of chronic diseases. As set out in the “Outline of the 15<sup>th</sup> Five-Year Plan for National Economic and Social Development of the People’s Republic of China” (the 15<sup>th</sup> Five-Year Plan), our country will advance the “Healthy China” Initiative and implement a health-first strategy to improve the health of the people. The HKSAR Government is proactively aligning with the National 15<sup>th</sup> Five-Year Plan, and the Health Bureau will continue to deepen healthcare reform to enhance the overall efficiency and sustainability of our healthcare system.

The Health Bureau is driving forward a comprehensive reform agenda across medical services, medical products, and healthcare financing. On medical services, we are strengthening primary healthcare, enhancing the public healthcare system, promoting Chinese Medicine development, and boosting professional regulation. On medical products, we are reforming the approval mechanism for drugs and medical devices, with the Hong Kong Centre for Medical Products Regulation to be established within 2026. On healthcare financing, we are reviewing fees and charges for public healthcare and elevating price transparency of private healthcare services. To further fortify medical education and research in pursuit of an international health and medical innovation hub, we are establishing our third medical school which will admit its first cohort in 2028.

The HA is a critical part of the healthcare reform. In 2026, it implemented the fees and charges reform for public healthcare, designed to enhance protection for “poor, acute, serious and critical” patients while ensuring the long-term sustainability of our public healthcare system to ensure that no patient is denied medical care due to lack of means. To increase manpower, the HA has recruited more qualified non-locally trained healthcare professionals, expanded the Mainland Healthcare Talents Visiting Programmes, and enhanced its Global Healthcare Talent Scheme. To accelerate patient access to innovative drugs and medical devices, the HA has set up a dedicated office to identify innovative treatments and proactively liaise with manufacturers. Additionally, to enhance healthcare efficiency and achieve sustainable development, developing smart hospitals remains a key strategy for the HA.

Beyond advancing healthcare service quality and efficiency, the HA is driving excellence by adopting national hospital accreditation standards. Four public hospitals have successfully obtained accreditation under China’s International Hospital Accreditation Standards (2021 Version), with more to follow. Significant outcomes have also been achieved in adopting national accreditation standards in the establishment of Chest Pain Centres, Stroke Centres and Integrated Cardiovascular Diseases Centres. These efforts ascertain that the management, services and medical quality of our public hospitals meet both national and international standards, and facilitate the national accreditation standards to go global.

With the staunch support of the country and the HKSAR Government, I am confident that the HA, with its people-centred care, professional service, committed staff and teamwork, will continue to enhance Hong Kong’s public healthcare services and contribute to the development of Hong Kong into a health and medical innovation hub.

As a flagship event of the healthcare community, the HA Convention 2026 brings together over 8 000 delegates from Hong Kong, the Mainland, Asia and beyond, offering an excellent opportunity to share, network and bring advances in healthcare services quality and management.

I would like to offer my sincere congratulations to the HA for their outstanding efforts in making this Convention a success. May every participant enjoy a rewarding and insightful experience, and may all those visiting from afar have a most pleasant and memorable time in Hong Kong.

**Professor LO Chung-mau**

Secretary for Health  
The Government of the Hong Kong Special Administrative Region  
The People’s Republic of China



## Message from Chairman

Hospital Authority, Hong Kong, The People's Republic of China

On behalf of the Hospital Authority (HA), I am pleased to welcome all distinguished guests, speakers and participants attending the HA Convention 2026. This year's Convention holds particular significance. It not only provides a platform for fostering collaborations and knowledge exchange, but also marks the important milestone of HA's 35<sup>th</sup> anniversary – celebrating our long-standing commitment to enhancing Hong Kong's public healthcare services.

The journey towards a sustainable healthcare system remains enduring. The public healthcare fees and charges reform (the reform), implemented at the start of this year, demonstrates HA's determination to reinforce healthcare sustainability while serving as a safety net for all. By enhancing protections for patients in need while ensuring optimal use of healthcare resources, the reform has improved service efficiency and quality. The success of the reform is attributed to the unwavering support and visionary leadership of the Health Bureau of the Hong Kong Special Administrative Region (HKSAR) Government, as well as the tireless dedication of every member within HA – to whom we owe our deepest gratitude.

As we advance with the implementation of the reform, we remain dedicated to improving the services and management standard of public hospitals. Following the success of Pamela Youde Nethersole Eastern Hospital, and Prince of Wales Hospital, the United Christian Hospital and Tuen Mun Hospital have also achieved accreditation under the China's International Hospital Accreditation Standards (2021 Version) in 2026. We will continue to prioritise patient safety and patient-centred care, which underpin a quality and trustworthy healthcare system.

For over three decades, the HA Convention has inspired meaningful dialogues, fostered collaborations, and reaffirmed our shared vision for a healthier future. This year, the three-day programme will continue to provide excellent opportunities for our national experts and international counterparts to explore diverse healthcare topics, generating new ideas and solutions to propel our system forward. My sincerest appreciation goes to all speakers and participants for generously sharing their expertise and insights.

I also wish to express my heartfelt thanks to Professor ZENG Yixin, Vice-Minister (Minister level), National Health Commission, The People's Republic of China; Mr CHEUK Wing-hing, Acting Chief Secretary for Administration of the HKSAR Government; and Professor LO Chung-mau, Secretary for Health of the HKSAR Government, for gracing at the Opening Ceremony of the HA Convention 2026 as officiating guests. Their presence highlights the importance of this Convention, and reflects their unfaltering support for the HA.

I wish you all an engaging and rewarding conference.

**Mr Henry FAN Hung-ling**

Chairman  
Hospital Authority, Hong Kong  
The People's Republic of China



## Message from Chief Executive

Hospital Authority, Hong Kong, The People's Republic of China

It is a great honour to welcome you all to the Hospital Authority (HA) Convention 2026.

This year marks the 35<sup>th</sup> anniversary of HA. Over the past 35 years, Hong Kong has developed a highly efficient and world-class public healthcare system which we take pride in. All remarkable achievements would not be possible without the extraordinary professionalism and collaborative efforts of all HA staff past and present. My heartfelt gratitude goes to all HA staff, and also the Hong Kong Special Administrative Region Government for their staunch support, as well as trust from various stakeholders and the general public.

The healthcare landscape and social environment are constantly evolving, and technology, especially artificial intelligence is transforming the way we use and deliver healthcare services. Major reform that aims to shape a more equitable future of healthcare services is thus the key to address these challenges. The HA has taken decisive moves to enhance the capability and sustainability of public healthcare services through precise resource allocation and promotion of human-centred culture. Among which, the successful implementation of the public healthcare fees and charges reform has strengthened protection for “poor, acute, serious and critical” patients while driving the sustainable development of public healthcare; the strategic reposition of our family medicine clinic services enables the underprivileged communities be better served with comprehensive primary healthcare services through the Family Medicine service model; and the introduction of Animal-Assisted Activities and Personal Pet Visitation programmes have provided greater emotional support to patients.

To address the challenges we are facing, we are accelerating the application of augmented intelligence, robotic assistance, big data, and many more cutting-edge technologies, which include digital bed management system that shortens the accident and emergency departments-to-ward admission times; artificial intelligence on deterioration prediction and alert system that predicts the risk of deterioration in hospitalised patients; and many more. All these improve service efficiency and quality, and most importantly enhance HA's capability to deliver human-centred care. Meanwhile, we are deepening collaborations with universities and industry partners to translate clinical data into evidence-based practices that benchmark against international standards, positioning Hong Kong as the hub for global healthcare collaboration.

Leveraging Hong Kong's unique position as a gateway between the East and the West, the HA Convention serves a perfect platform for healthcare professionals and stakeholders from around the globe to connect and engage in discussions about the latest healthcare advancements and challenges. Focusing on the HA's core values – “People-centred Care”, “Professional Service”, “Committed Staff” and “Teamwork”, about 200 distinguished local, Chinese Mainland and overseas speakers will share their invaluable insights. Across over 75 sessions in the scientific programme, we will explore topics ranging from healthcare development and sustainability, chronic disease management, cancer treatment, to palliative care and advance directives.

I would like to extend my heartfelt thanks to the Organising Committee, Scientific Programme Committee, Convention Secretariat, and every colleague for their concerted efforts in making this three-day conference a success.

My sincere appreciation also goes to all the speakers for their support and valuable contribution. We look forward to your active participation, and I wish everyone a fruitful and inspiring experience.

**Dr Libby LEE Ha-yun**

Chief Executive  
Hospital Authority, Hong Kong  
The People's Republic of China

## Organising Committee .....

### Chairman

Mr Henry FAN Hung-ling

### Vice-Chairman

Dr Libby LEE Ha-yun

### Members

Ms Anita CHAN

Dr Eric CHEUNG

Dr N T CHEUNG (up to Dec 2025)

Dr W K CHING (up to Dec 2025)

Mr Andy LAU

Dr C B LAW

Dr Theresa LI

Ir Kelvin LO

Mr David MAK

Dr Loletta SO

Dr Simon TANG

Dr Michael WONG

Dr Y C WONG

Dr Y C WUN

Dr Deacons YEUNG

## Scientific Programme Committee .....

### Chairmen

Dr David SUN

Dr Kenny YUEN

### Members

Dr N Y CHAN

Mr Simon CHENG

Dr Eric CHEUNG

Dr H M CHEUNG

Dr N T CHEUNG (up to Dec 2025)

Dr Catherine CHONG

Prof Y B FENG<sup>^</sup>

Dr Jeffrey LAI

Mr Andy LAU

Dr C B LAW

Dr C K LEE

Dr Larry LEE

Dr Linda LEUNG (up to Feb 2026)

Dr Raymond LEUNG<sup>^</sup>

Dr Will LEUNG

Dr Y Y LEUNG

Prof Philip LI<sup>^</sup>

Dr Theresa LI

Ir Kelvin LO

Mr David MAK

Dr K L NG

Prof Simon NG<sup>^</sup>

Dr Joanna PANG

Ms Priscilla POON

Prof David SHUM<sup>^</sup>

Dr Bonnie SIU

Dr Loletta SO

Dr Simon TANG

Dr Danny TONG

Ms Joanna WONG

Prof Victoria WONG<sup>^</sup>

Dr Y C WOO

Dr Y C WUN

Dr Deacons YEUNG

<sup>^</sup> Advisor – Non-HA

Convention Hall ^#							
0845-0930	Opening Ceremony						
0930-1000	Break						
1000-1200	<p><b>Opening Plenary – Healthcare to Global</b></p> <p>Collective Efforts in Maintaining Global Health</p> <p>Medical Equity – A Global Perspective</p> <p>Surgery as a Facilitator of Global Healthcare</p> <p>醫療機器人創新—從北京實踐走向全球健康公平 (Innovation in Medical Robotics: From Beijing Practices to Global Health Equity) *</p>						
1200-1330	Break						
	Convention Hall ^#	Theatre 1 ^#	Theatre 2	Room 221	Room 224 & 225	Room 226 & 227	Room 421
1330-1445	<p><b>Plenary I – The Non-Communicable Disease Challenge: From Global Equity to Personal Frailty</b></p> <p>The Equity Gap: Confronting the Non-Communicable Disease Burden in the Western Pacific</p> <p>A Deep Dive on Kidney Disease: Innovation and Integration of Non-Communicable Disease Management</p> <p>The Human Outcome: Preventing and Managing Frailty in an Aging Population with Non-Communicable Diseases</p>	<p><b>Symposium 1 – Data-driven Clinical Practices</b></p> <p>Artificial Intelligence in Healthcare: The Most Urgent Issues</p> <p>Hospital Building and Artificial Intelligence in Medicine</p> <p>Immersive, Interactive, and Intelligent: Reimagining Medical Education and Patient Communication with Virtual Reality and Artificial Intelligence</p>	<p><b>Special Session 1 – Empowering Nursing Leadership for Advancing Excellence in Nursing Practice</b></p> <p>Transformational Leadership in Nursing: Preparing for Future Healthcare Development</p> <p>Leadership in Nursing: Fostering a Culture of Credibility</p> <p>Patient Involvement and Engagement: An Open Invitation to Nurses</p>	<p><b>Special Session 2 – Research Excellence and Innovation at CUHK Medicine</b></p> <p>Using Data to Transform Diabetes Care and Patient Lives</p> <p>Novel Treatment Concept for Liver Cancer</p> <p>Innovation in Diagnosis and Treatment of Aortic Diseases</p>	<p><b>Special Session 3 – Clinical Excellence – Winning Presentations from Hong Kong Academy of Medicine Colleges I</b></p> <p>Does Local Excision Alone without Salvage Surgery Affect the Prognostic Outcome of Patients with Malignant Colorectal Polyp? A Long-term Survival Analysis</p> <p>Upper Limb Necrotising Fasciitis – A 20-year Review</p> <p>Ultrasound Assessment of Progress in Labour: A Feasibility Study</p>	<p><b>Masterclass 1 – Recent Advances in Hospital Authority Gastrointestinal Services</b></p> <p>Faecal Microbiota Transplant</p> <p>Clinical Application of Intestinal Ultrasound in Inflammatory Bowel Disease</p> <p>Advance in Hepatitis B Treatment</p> <p>Inflammatory Bowel Disease Smart Care: An Electronic Patient-reported Outcome Measures-based Telehealth Model for Inflammatory Bowel Disease</p>	<p><b>Symposium 2 – The Future of Structural Heart Disease Programme</b></p> <p>Preparing for the Tsunami of Structural Heart Interventions: Perspectives from a Clinician and Hospital Administrator</p> <p>The Future of Structural Heart Disease Programme: Where Are We Now? The Hong Kong and Greater Bay Area Perspective</p> <p>How Imaging and Heart Failure Programme Contribute to the Structural Heart Tsunami?</p>
	1445-1500	Break					
1500-1615	<p><b>Plenary II – Affordable Advancement in Healthcare</b></p> <p>Real-world Evidence in Clinical Practice: Methods, Biases, and Opportunities for Hong Kong and the Greater Bay Area</p> <p>Healthcare Quality Improvement in the National Health Service in England: the Role of National Institute for Health and Care Excellence (NICE)</p> <p>Establishment of the Institute for Medical Advancement and Clinical Excellence: Core Values, Mission and Challenges</p>	<p><b>Special Session 4 – Hong Kong Academy of Medicine Symposium and Roundtable Discussion: Navigating the New Frontiers in Medical Education</b></p> <p>Hong Kong Academy of Medicine Position Statement on Artificial Intelligence in Medical Education</p> <p>Challenges and Opportunities in Postgraduate Medical Education, Canadian Perspectives</p> <p>The Innovator and Implementer – Beyond the Bot: Integrating Simulation and Immersive Technologies in Medical Education</p> <p>Educating Clinicians: Navigating Well-being, Professional Identity, and Adaptive Assessment in Modern Training</p>	<p><b>Parallel Session 1 – Co-creating Health Solutions</b></p> <p>How Artificial Intelligence Search Is Becoming the Fastest Adopted Technology by Clinicians</p> <p>Connecting Care Empowering Health – Tencent's Innovation in Healthcare</p> <p>Collaborative Generative Artificial Intelligence (Co-GenAI): A Novel Fusion-driven Framework</p>	<p><b>Special Session 5 – Striving for Clinical Excellence in HKUMed – Presentations by Recipients of the 2025 Faculty Clinical Service Excellence Award</b></p> <p>Hong Kong Paediatric Neuromuscular Disorders Excellence Programme</p> <p>Excellence in Action: How Teamwork Transformed Stroke Care at Queen Mary Hospital</p> <p>A Physician Ambassador for Neuro-Oncology Patients: Establishing a Service of Excellence at HKUMed</p> <p>The Unbreakable Will: The Path to Recovery after Spinal Cord Injury</p> <p>Breaking Barriers: Improving Lives of People Living with Chronic Liver Disease</p>	<p><b>Special Session 6 – Clinical Excellence – Winning Presentations from Hong Kong Academy of Medicine Colleges II</b></p> <p>Transversus Thoracis Muscle Plane Block for Acute and Chronic Pain Management in Cardiac Surgical Patients for Sternotomy: A Prospective Randomised Controlled Trial</p> <p>Smartphone-based Personal Sound Amplification Product on Self-perceived Communication Function in Older Adults with Hearing Loss: A Randomised Controlled Trial</p> <p>Determinants of Treatment Burden in Older Adults with Multimorbidity: A Territory-wide, Cross-sectional Study Across 19 Centers in Hong Kong</p>	<p><b>Masterclass 2 – A Dot in the Lung: What Does It Mean and What Should We Do?</b></p> <p>Application of Artificial Intelligence in Assessment of Pulmonary Module</p> <p>The Diagnostic Approach to Pulmonary Module: Surveil? Biopsy? Resect?</p> <p>Advances in Diagnostic and Therapeutic Strategies for Pulmonary Modules</p> <p>From Chest X-Ray to Computed Tomography: Lung Cancer Screening</p>	<p><b>Special Session 7 – Primary Health Care in Hong Kong</b></p> <p>Continuity of Care – A Hallmark of Quality Primary Care</p> <p>Translating Evidence to Primary Healthcare Policy</p> <p>Evolutionary Changes in Family Medicine from a Corporate Wide Perspective</p>
	1615-1630	Break					
1630-1745	<p><b>Plenary III – Sustainability in Healthcare: From Facilities to Technologies</b></p> <p>The Hospital as City: Reclaiming Care, Civic Life and Sustainability</p> <p>The New Era of Artificial Intelligence: Innovation in Healthcare and Future Vision Prospects</p>	<p><b>Symposium 3 – Preparedness of Major Events</b></p> <p>Medical Preparedness for the FIFA World Cup 2022, Qatar</p> <p>Medical Support for Horseracing in Hong Kong</p> <p>Framing the Medical Support for Major Events</p>	<p><b>Symposium 4 – Strategic Conglomeration of Global Talents</b></p> <p>Smart Integrated Telementoring and Research Endoscopic Operating Room</p> <p>An Interventional Radiologist Abroad: Finding the Right Path When the Map Is Unfamiliar</p> <p>Advancing Orthopaedic Specialist Training in the Chinese Mainland: Hong Kong's Role as the "Super Connector"</p>	<p><b>@ Symposium 5 – Updates on Hospital Accreditation and Development of Single Disease and Clinical Pathway</b></p> <p>Shaping China's International Hospital Accreditation Standards for Modern Hospital Management</p> <p>Leveraging Hospital Accreditation to Drive High-quality Development</p> <p>Single-disease and Clinical Path Management</p>	<p><b>Special Session 8 – Innovation for Advanced Nursing Care I</b></p> <p>Journey Mapping to Explore the Adaptability of Junior Nurses to Clinical Practice: A Qualitative Study</p> <p>Evaluating the Impact of Multicomponent Education on Nurses' Knowledge, Attitudes and Practices of Physical Restraint Use in Acute Care Setting: A Pilot Study</p> <p>Application of Implementation Science – PEDALS Model to Drive Changes: The Roll Out of Electronic Intake and Output (e-I&amp;O) System in 4 Public Hospitals in Hong Kong</p>	<p><b>Masterclass 3 – Neurosurgery Advancement through Hospital Authority Mechanism for the Safe Introduction of New Procedure/Technology</b></p> <p>The Gift of Breathing: The Story of Diaphragmatic Pacing</p> <p>Magnetic Resonance Imaging Guided Laser Interstitial Thermal Therapy (LITT)</p> <p>Robotic Neurosurgery Stereoelectroencephalography (SEEG)</p> <p>The Evolution of Deep Brain Stimulation for Drug Resistant Epilepsy in Hong Kong</p>	<p><b>Special Session 9 – Health and Medical Research Fund: Be the Catalyst in Research Collaboration and Translation in Hospital Authority</b></p> <p>Translating Research into Real-world Impact: A Randomised Control Trial of SIM01 for Post-acute COVID-19 Syndrome</p> <p>Translating Health and Medical Research Fund (HMRP) Funding into Career Advancement and Clinical Change in Reproductive Medicine</p> <p>Synergistic Advancements of Blood Cancer Research and Genomic Services in Hospital Authority Empowered by Health and Medical Research Fund Initiatives</p> <p>Collaborating for Better Survivorship Care in Young Individuals with Cancer: Reflections on Our Shared Journey</p>

^ Simultaneous interpretation (English/Putonghua) is available at this venue \* Presentation in Putonghua # Sessions will be available online @ AI transcription (English/Traditional Chinese)

	Convention Hall ^#	Theatre 1 ^#	Theatre 2 ^#	Room 221 #	Room 224 & 225	Room 226 & 227	Room 421	Room 423 & 424
0900-1030	<b>Plenary IV – Advance Care Planning and Advance Medical Directive</b>	<b>Parallel Session 2 – Bridging the Gap: Research to Practice</b>	<b>Symposium 6 – Advancements in Stroke Service</b>	<b>Symposium 7 – Advancing Cell and Gene Therapy under Current Regulatory Framework</b>	<b>Special Session 10 – Strategic Partnerships and Community Engagement for Addressing Key Determinants of Health</b>	<b>Masterclass 4 – Postpartum Haemorrhage – An Update</b>	<b>Parallel Session 3 – Innovation for Advanced Nursing Care II</b>	<b>Masterclass 5 – Update on Management of Bone Metastases</b>
	在中國文化視角下推廣生前預囑的策略 (Strategies to Promote Living Will in Chinese Culture)*  The Advance Decision on Life-sustaining Treatment (ADLST) Ordinance: Challenges that Follow  Advance Medical Directive in Hong Kong: A Legal Perspective  Advance Medical Directive and Advance Care Planning – The Singapore Experience	Going Founder Mode on Cancer – The Futuristic Case Study of Sid Sijbrandij  From Lab, Technology to Incision: Minimally Invasive Skull Base Neurosurgery Unlocked  Territory-wide Deployment of an Electronic Health Record-integrated Hip Fracture Detection Model: Diagnostic Performance, Clinician Interaction, and Health-system Operational Associations	Recent Advances in Hyperacute Stroke Care  超低場移動磁共振的臨床應用 (Clinical Applications of Ultra-low Field Moving Magnetic Resonance Imaging)*  From Stoke Care to Brain Care	The Complex and Evolving Issues on Cell and Gene Therapy Regulatory Framework  Quality is the New Quantity: Scaling the Global Pharmaceutical Inspection Co-operation Scheme Standard to Define the Greater Bay Area's Cell Gene Therapy Future  Advanced Therapy Products – The Regulatory Perspective	Towards a Smoke-free Hong Kong: Strengthened Strategies for Tobacco Control  Fostering Partnership in the Fight Against Antimicrobial Resistance: Why, What and How?  Intersectoral Collaboration in Promoting Weight Management	Update on the Incidence of Postpartum Haemorrhage after One Year of Universal Carbocetin for all Caesarean Sections in Hospital Authority  Trend and Outcomes of Massive Primary Postpartum Haemorrhage: Impact of Second-line Therapies in a Hong Kong Tertiary Obstetric Unit  Patient Blood Management in Obstetrics	Better Nursing Handover Communication: Interdisciplinary, Translational Research and Training  3D Pre-operative Gamified Animation Training for Post-operative Pain Management  Validation of Capnography as a Bedside Method for Nasogastric Tube Placement Confirmation  A Randomised Control Trial to Develop and Evaluate an Infection Control Simulation Training for Nursing Students	Integrate Systemic Therapies and Radiation Therapy – Curative and Palliative  Role of Modern Imaging Techniques for Diagnosis, Staging and Response Assessment  Surgical Intervention for Spinal Metastasis: A Personalised Multidisciplinary Approach to When and How?  Pelvis Metastasis: Death Zone?  Pain Management for Metastatic Bone Pain
1030-1050	Break							
1050-1220	<b>Plenary V – Surfing on the Next Wave of Pandemic</b>	<b>Symposium 8 – Personalised and Patient-centric Management in Cardiovascular Medicine</b>	<b>Parallel Session 4 – Value-based Care</b>	<b>Symposium 9 – Integration of Palliative Care for Patients with Cancer for Provision of Supportive Cancer Care</b>	<b>Symposium 10 – Geriatric Fractures: Building Stronger Bones, Preserving Lives</b>	<b>Masterclass 6 – Novel Sonographic Techniques in Obstetrics and Gynaecology</b>	<b>Parallel Session 5 – Innovation for Advanced Nursing Care III</b>	<b>Masterclass 7 – Transforming Orthopaedic Outcomes with Technology and Teamwork</b>
	Automated Surveillance Systems and Data-driven Infection Monitoring in Hospital  Optimise Country's System Readiness for Global Public Health Security  Impact of World Health Organisation Pandemic Agreement 2025	Holistic and Patient-based Management in Heart Failure  Smart Risk Assessment for Smarter Heart Care: P-CARDIAC  Current and Future Artificial Intelligence Application in Cardiovascular Medicine	Smarter Testing, Better Care: A Scalable Model for High-Value Practice  Driving Value through Healthcare Innovation  Cost-effectiveness as a Path to Sustainable and Fair Healthcare	Symptom Screening with Targeted Early Palliative (STEP) Care for Patients with Advanced Cancer  Triggering Criteria and Other Initiatives at the Royal Marsden  Integration of Palliative Care for Patients with Cancer	Update on the Management of Fragility Fractures  Update on the Management of Osteoporosis  Fall in Geriatric Population	Point of Care Ultrasound in Obstetric and Gynaecological Emergencies  Enhancing Patient Safety with Intrapartum Ultrasound at the Second Stage of Labour  High-Intensity Focused Ultrasound for Uterine Fibroids and Other Gynaecological Conditions	A Pilot Community Cardiopulmonary Resuscitation Programme in Rural Area of Hong Kong  A Pilot Study of an Interprofessional Mindfulness Group for Overactive Bladder in Women  Innovating Palliative Care Nurse-led Pilot for Young Oncology Patients Using ESG (Environment, Social and Governance) Perspectives	Long-term Use of Tenofovir Disoproxil Fumarate Increases Fracture Risk in Elderly Patients with Chronic Hepatitis B  Making Use of Your Natural Partner to Assess for Instability in Ankle Fractures  First Allied Health Clinic under Integrated Model of Specialist Outpatient Services of Orthopaedics and Traumatology – SAFE Programme
1220-1330	Break							
1330-1500	<b>Plenary VI – Integrated Oncology and Palliative Care</b>	<b>Symposium 11 – Artificial Intelligence and Health Medicine</b>	<b>Parallel Session 6 – Integrated Pathways for Chronic Care</b>	<b>@ Symposium 12 – Transforming Concept into Reality in Hospital Constructions</b>	<b>Symposium 13 – Innovations in Medical Training and Career Pathway</b>	<b>Masterclass 8 – Synthetic Computed Tomography and Breast Cancer Care</b>	<b>Parallel Session 7 – Leveraging Smart Technology to Achieve Clinical Excellence in Allied Health Services</b>	<b>Masterclass 9 – Diagnosis of Paediatric Diseases in the Genomic Era – A Pathologists' Perspective</b>
	Integration of Palliative Care with Oncology for Comprehensive Cancer Care  Early Palliative Care in Oncology  Molecular Science in the Era of "Healthy China"	Distributed Generative Artificial Intelligence: Reshaping the Future of Medical Intelligence  Development and Deployment of Artificial Intelligence Techniques in Clinical Workflow	人工智能協同賦能基層醫療機構，強化精準醫療綜合能力 (Artificial Intelligence Collaboration Empowers Primary Healthcare Institutions Enhance Precision Healthcare Capabilities)*  Medical Robotics – the Present and Future  Everyday, Everywhere, Everyone – Transforming Innovation into Better Patient Outcome in Community Rehabilitation	以健康為中心的醫療建築 (The Design Trends in Hospital-centred Hospital Architecture)*  醫療保健架構中的範式反覆運算 (Paradigm Iteration in Healthcare Architecture)*  人工智慧背景下綜合醫院建築平面智慧化生成與優化設計的探索 – 以中心手術部為例 (An Exploration of Intelligent Generation and Optimisation Design of Comprehensive Hospital Architectural Floor Plans under the Background of Artificial Intelligence – Taking the Central Operating Room as an Example)*	Assistant Internship and Future Generation of Medical Graduates  Dual Synergy: Hospital Authority and Academia for Impact  From Compliance to Adaptivity: Building a Safety Culture Through Education	To See What You Treat – Clinical Feasibility of Magnetic Resonance-only Radiotherapy Using Synthetic Computed Tomography  Less is More: The Promise of Ultra-hypofractionated and Partial Breast Radiotherapy  Empowering Choice: BRCA, Genomic Testing and Personalised Therapy in Breast Cancer Care	How Information Technology Advancement Contributes in Hospital Authority's Physiotherapy Service?  Enhancing Quality and Safety: Artificial Intelligence-assisted Training for New Recruits  Designing Intelligent Systems for Cognitive Support in Later Life: Robotics, Artificial Intelligence, and Real World Implementation	A Pathologist-led Laboratory Genetic Diagnostic Service – What and Why  Genetic and Genomic Pathology Service at Hong Kong Children's Hospital  Navigating Neonatal Challenges: A Case Illustration on Acute Neonatal Encephalopathy  The Vital Partnership Between Clinical Care and Genetic Pathology – The Case of Solid Tumours
1500-1530	Break							
1530-1700	<b>Plenary VII – Technology Advancement and Service Development</b>	<b>Symposium 14 – End-of-Life Care (EOL) in Residential Care Homes for Elderly (RCHE)</b>	<b>Symposium 15 – Technological Innovation in Hospital Constructions</b>	<b>Special Session 11 – Advances in Health Technology</b>	<b>Symposium 16 – Statistics and Data Science in Healthcare: Unlocking the Power of Data</b>	<b>Masterclass 10 – Breast Cancer Management in the Modern Era</b>	<b>Parallel Session 8 – Transforming Allied Health Practices: Exploring New Technologies for Enhanced Patient Care</b>	<b>Parallel Session 9 – Innovation in Practice</b>
	Challenges and Opportunities in Implementing Artificial Intelligence in Smart Hospitals  From Opacity to Restoration: Advancing Keratoprosthesis Surgery	Developing End-of-Life Care in Residential Care Home for the Elderly in Hong Kong  Community Support for End-of-Life Care and Dying in Place in Residential Care Home for Elderly  Strengthening End-of-Life Care in Nursing Homes: An Empowerment-based Capacity-building Model  Panel Discussion	The Hospital as Innovator: Proactive, Personalised and Interconnected  Building the Future of Healthcare: How the Centre Hospitalier Universitaire de Nantes Integrates Innovation, Sustainability, and Urban Synergy	Enhancing Home-based Rehabilitation through Locally Tailored Technological Innovations  Robotics to Support Healthy Ageing  Wearable Robotics in Stroke Rehabilitation: Restoring Hand Function and Mobility	Direct and Indirect Impact of COVID on Public Health  Protection and Waning of Vaccine-induced, Natural and Hybrid Immunity to SARS-CoV-2 in Hong Kong  From Insight to Impact: Evidence-based Policy Formulation and Service Planning	The Modern Multidisciplinary Breast Center: From Co-location to True Integration  Multidisciplinary Management of Breast Cancer: A Radiologist's Role  Advances in Breast Cancer Oncological Treatment	Advanced Technology in Hospital Authority's Prosthetic Service  Evaluation of the Efficacy of Telehealth in Dietetic Management of Diabetes Mellitus: Pilot Study  Evaluation of the First Advanced Practice Radiation Therapist Role in Hong Kong: Specialist in Urological Cancer	Nurturing an Innovation Ecosystem in our Public Healthcare System  SmartCare: Smarter Education, Documentation, and Better Patient Care  Peritoneal Dialysis Patient Empowerment by Ultrabag Connecting Device  Proof of Concept 1 – Transforming Innovation into Better Patient Outcome – Innovative Simulation Training in Trauma  Proof of Concept 2 – From Innovation to Better Patient Experience and Clinic Operations Optimisation

^ Simultaneous interpretation (English/Putonghua) is available at this venue \* Presentation in Putonghua # Sessions will be available online @ AI transcription (English/Traditional Chinese)

	Convention Hall ^#	Theatre 1 ^#	Theatre 2 ^#	Room 221 #	Room 224 & 225	Room 226 & 227	Room 421 #
0900-1030	<b>Plenary VIII – Innovations and Advances in Surgery</b>	<b>Symposium 17 – New Drug and New Treatment Strategy from Chinese Medicine or Herbal Medicine for Unmet Medical Needs</b>	<b>Symposium 18 – Advanced Technology to Improve Safety and Well-being in the Workplace</b>	<b>Service Enhancement Presentation 1</b>	<b>Symposium 19 – Big Data and Advanced Technology</b>	<b>Symposium 20 – Supporting Patients in Community or Elderly and End-of-Life Care</b>	<b>Service Enhancement Presentation 2</b>
	Surgical Advances in Management of Liver Cancer Re-defining the Indications for Aortic Surgery in Women Advances in Robotic Microsurgery: Applications, Innovations and Future Directions Robotic Surgery in Urology: From Technology to Clinical Practice	WE (Western + Eastern) Medicine as the Foundation of Future Medicines: YIV-906 Case Study – a Modernised 1800-year-old Formula to Improve Cancer Treatment Outcomes Chinese Medicine in Cancer Management: From Empiric to Evidence-based Medicine 外骨骼機器助力職安健 (Advanced Exoskeleton Technology to Improve Safety and Well-being in the Workplace)*	Advancements in Artificial Intelligence and Robotic Solutions for Occupational Health/Safety in Hospital and Elderly Care Environments Embarking on a Journey to Explore Innovative Occupational Safety and Health Technologies in Osaka World Expo and Düsseldorf A+A Congress	Better Manage Growing Demands I Better Manage Growing Demands II	Brain and Big Data Orchestrating Complexity: Building a Safety-driven Intraoperative Magnetic Resonance Imaging Service through Multidisciplinary Collaboration and Workflow Precision Pathology Foundation Models Transforming Precision Oncology and Patient Care	Strengthening Post-discharge Care through Medical-social Collaboration: A Pilot Study of Family Caregiver Support in Hong Kong Creating an Age-friendly City: Community Support for the End-of-Life The Future of End-of-Life Care Policy in Hong Kong	Staff Engagement and Empowerment Clinical Safety & Quality Service I
1030-1050	Break						
1050-1220	<b>Plenary IX – Improving Surgical Outcomes through Global Collaborative Research</b>	<b>Symposium 21 – Is Managing Cardiovascular-Kidney-Metabolic Syndrome Transformative for Reducing Diabetes Complications?</b>	<b>Symposium 22 – Sustainable Healthcare System</b>	<b>Service Enhancement Presentation 3</b>	<b>Symposium 23 – Organ Transplant: A Step Forward in Promoting Organ Donation and Saving Lives</b>	<b>Masterclass 11 – Cataract Surgery</b>	<b>Service Enhancement Presentation 4</b>
	Improving Surgical Outcomes through Global Collaborative Research: Challenges and Opportunities Turning Data into Safer Surgery: From Audit to Intelligence in Surgical Outcome Monitoring How We Translate Robotic Surgical Technologies from Bench to Bedside in Hong Kong	Origins and Treatments for the Cardiovascular-Kidney-Metabolic Syndrome Managing Cardiovascular-Kidney-Metabolic Syndrome: Are We Ready Yet?	From Projects to Systems: Building Sustainable Healthcare That Delivers Healthcare Sustainability from Both a Leadership and Ground-up Perspective New Era of Medical Education	Clinical Safety & Quality Service II Clinical Safety & Quality Service III	Expanding the Donor Pool – Australia's Approach Increasing Organ Availability through Expanded Criteria: A Case Illustration Approach Increasing Organ Availability through Expanded Criteria: Surgical Innovations and Strategies Expanding the Local Donor Pool – Learning from Australia's DonatELife Model Family Support in the Donation Journey	Expanding the Donor Pool – Australia's Approach Immediate Sequential Bilateral Cataract Surgery – Sustainability and Resistance High Flow Cataract Surgery – Hospital Authority's Experience Optimising Cataract Services through Structured Peri-operative Nursing Artificial Intelligence-enhanced Cataract Care: Improving Quality and Efficiency The Future – New T8 Territorial Cataract Centre	Healthcare Advances, Research and Innovations Collaboration and Teamwork
1220-1330	Break						
1330-1500	<b>Plenary X – Medical Equity: Organ Transplant</b>	<b>Symposium 24 – Fostering Wellness and Fulfilment at Work</b>	<b>Symposium 25 – Smart Operating Theatre from Anaesthetist and Surgeon Perspectives</b>	<b>Service Enhancement Presentation 5</b>	<b>Masterclass 12 – Challenges and Recent Development in Clinical Toxicology</b>	<b>Special Session 12 – Enhancing Stroke Care through Evidence-Based Integrated Chinese-Western Medicine: A Collaborative Model of Western and Chinese Medicine in Hong Kong</b>	<b>Service Enhancement Presentation 6</b>
	Organ Donation Conundrums in Asia and their Solutions Improving Transplant Equity through ABO Histocompatibility	Harnessing Positive Psychology for Enhanced Happiness and Success Building Resilience and Leveraging Personal Strengths: Lessons from Healthcare, Ice Climbing, and Mountains Financial Wellness: Empower Staff for a Secure Future	Smart Operating Theatre and Perioperative Journey – An Anaesthesiologist's Perspective Smart Theatre from the Perspective of a Surgeon Smart Operating Theatre – from Engineer's Perspective	Young Hospital Authority Investigators Presentations Presentation of Best Poster Presentation Awards and Sharing Session I	Etomidate Abuse: the Anti-Drug Effort from Hospital Authority Clinical Management of Etomidate Abuse: Current Knowledge and Controversies Integrated Chinese-Western Medicine Treatment Safety Antidote Coordination in Crisis: Lessons from Poisoning Incident, Outbreak and Disaster	The Efficacy of Integrated Chinese-Western Medicine Programme in Stroke Rehabilitation 中醫在中西醫協作治療中風的優勢 (The Advantages of Chinese Medicine in Integrated Chinese-Western Medicine Stroke Care) ▲	Presentation of Best Poster Presentation Awards and Sharing Session II
1500-1530	Break						
	Presentation of Awards (Convention Hall)						
1530-1630	Hospital Authority Outstanding Staff and Teams Award Presentation Ceremony 2026						
1630-1700	Photo taking (Convention Hall, Room 221 & Room 421)						

^ Simultaneous interpretation (English/Putonghua) is available at this venue \* Presentation in Putonghua # Sessions will be available online ▲ Presentation in Cantonese

0845 – 0930	<b>^# Opening Ceremony</b>
	<p style="text-align: center;"><b>Welcome Address</b></p> <p style="text-align: center;">Mr Henry FAN Hung-ling, Chairman, Hospital Authority, Hong Kong, The People's Republic of China</p> <p style="text-align: center;"><b>Congratulatory Message*</b></p> <p style="text-align: center;">Prof ZENG Yixin, Vice-Minister (Minister level), National Health Commission (NHC), The People's Republic of China (Read by Ms LI Wei, Deputy Director-General of the Office of Hong Kong, Macao and Taiwan Affairs, NHC, The People's Republic of China)</p> <p style="text-align: center;"><b>Special Address</b></p> <p style="text-align: center;">Mr CHEUK Wing-hing, Acting Chief Secretary for Administration, The Government of the Hong Kong Special Administrative Region, The People's Republic of China</p> <p style="text-align: center;"><b>Keynote Address</b></p> <p style="text-align: center;">Dr Libby LEE Ha-yun, Chief Executive, Hospital Authority, Hong Kong, The People's Republic of China</p>
0930 – 1000	Break
1000 – 1200	<b>^# Opening Plenary – Healthcare to Global</b> <span style="float: right;"><b>OP</b></span>
	<p><b>Chairperson: Mr Henry FAN Hung-ling</b>, Chairman, Hospital Authority, Hong Kong, China</p> <p><b>OP1 Collective Efforts in Maintaining Global Health</b> Prof Huong Thi Giang TRAN, Division Director, Division of Health Promotion, Disease Prevention and Control, World Health Organisation, Vietnam</p> <p><b>OP2 Medical Equity – a Global Perspective</b> Prof Jeremy CHAPMAN, Emeritus Consultant, Renal Unit, Westmead Hospital, Sydney, New South Wales, Australia</p> <p><b>OP3 Surgery as a Facilitator of Global Healthcare</b> Prof Dion MORTON, Professor of Surgery, Department of Surgery, University of Birmingham, The United Kingdom</p> <p><b>*OP4 Innovation in Medical Robotics: From Beijing Practices to Global Health Equity</b> 醫療機器人創新—從北京實踐走向全球健康公平 Ms GU Ying, Deputy Director, Beijing Hospitals Authority, Beijing, China 北京市醫院管理中心副主任谷穎</p>
1200 – 1330	Break

^ Simultaneous interpretation (English/Putonghua) is available at this venue \* Presentation in Putonghua # Sessions will be available online

1330 – 1445	<p><b>^# Plenary I – The Non-Communicable Disease Challenge: From Global Equity to Personal Frailty</b> <span style="float: right;"><b>P1</b></span></p> <p><b>Chairperson: Prof Grace TANG</b>, Chairman, Medical Council of Hong Kong, Hong Kong, China</p> <p><b>P1.1 The Equity Gap: Confronting the Non-Communicable Disease Burden in the Western Pacific</b> Prof Huang Thi Giang TRAN, Division Director, Division of Health Promotion, Disease Prevention and Control, World Health Organisation, Vietnam</p> <p><b>P1.2 A Deep Dive on Kidney Disease: Innovation and Integration of Non-Communicable Disease Management</b> Prof Marcello TONELLI, Professor, Department of Medicine, University of Calgary, Canada</p> <p><b>P1.3 The Human Outcome: Preventing and Managing Frailty in an Aging Population with Non-Communicable Diseases</b> Prof Philip LI Kam-tao, President, Hong Kong Academy of Medicine, Hong Kong, China</p>
1445 – 1500	Break
1500 – 1615	<p><b>^# Plenary II – Affordable Advancement in Healthcare</b> <span style="float: right;"><b>P2</b></span></p> <p><b>Chairperson: Dr Loletta SO</b>, Cluster Chief Executive, Kowloon East Cluster, Hong Kong, China</p> <p><b>P2.1 Real-world Evidence in Clinical Practice: Methods, Biases, and Opportunities for Hong Kong and the Greater Bay Area</b> Dr Benjamin YIP Hon-kei, Associate Professor, The Jockey Club School of Public Health and Primary Care, The Chinese University of Hong Kong, Hong Kong, China</p> <p><b>P2.2 Healthcare Quality Improvement in the National Health Service in England: the Role of National Institute for Health and Care Excellence (NICE)</b> Mr Hugh MCGUIRE, Senior Adviser, NICE International, National Institute For Health and Care Excellence, The United Kingdom</p> <p><b>P2.3 Establishment of the Institute for Medical Advancement and Clinical Excellence: Core Values, Mission and Challenges</b> Prof Gilberto LEUNG Ka-kit, Convenor, iMACE, Hong Kong, China</p>
1615 – 1630	Break
1630 – 1745	<p><b>^# Plenary III – Sustainability in Healthcare: From Facilities to Technologies</b> <span style="float: right;"><b>P3</b></span></p> <p><b>Chairperson: Mrs Sylvia LAM YU Ka-wai</b>, Board Member, Hospital Authority, Hong Kong, China</p> <p><b>P3.1 The Hospital as City: Reclaiming Care, Civic Life and Sustainability</b> Ms Abbie GALVIN, New South Wales Government Architect, Department of Planning Housing and Infrastructure, New South Wales, Australia</p> <p><b>P3.2 The New Era of Artificial Intelligence: Innovation in Healthcare and Future Vision Prospects</b> Prof CHEN Lei, Dean, Hong Kong University of Science and Technology-Guang Zhou Information Hub, China</p>

^ Simultaneous interpretation (English/Putonghua) is available at this venue # Sessions will be available online

1330 – 1445	<p><b>^# Symposium 1 – Data-driven Clinical Practices</b> <span style="float: right;"><b>S1</b></span></p> <p><b>Chairperson:</b> Mr Victor LAM Wai-kiu, Board Member, Hospital Authority, Hong Kong, China</p> <p><b>S1.1 Artificial Intelligence in Healthcare: The Most Urgent Issues</b> Dr Leo Anthony CELI, Senior Research Scientist, Institute for Medical Engineering and Science, Massachusetts Institute of Technology, The United States of America</p> <p><b>S1.2 Hospital Building and Artificial Intelligence in Medicine</b> Prof Gloria KWAK Hyunjung, Assistant Professor, Emory University, The United States of America</p> <p><b>S1.3 Immersive, Interactive, and Intelligent: Reimagining Medical Education and Patient Communication with Virtual Reality and Artificial Intelligence</b> Prof Pan HUI, Chair Professor of Computational Media and Arts (CMA), The Hong Kong University of Science and Technology (Guangzhou), Hong Kong, China</p>
1445 – 1500	<b>Break</b>
1500 – 1615	<p><b>^# Special Session 4 – Hong Kong Academy of Medicine Symposium and Roundtable Discussion: Navigating the New Frontiers in Medical Education</b> <span style="float: right;"><b>SS4</b></span></p> <p><b>Chairpersons:</b> Prof Philip LI Kam-tao, President, Hong Kong Academy of Medicine, Hong Kong, China Prof Clement THAM Chee-yung, Vice President, Education and Examination, Hong Kong Academy of Medicine, Hong Kong, China</p> <p><b>SS4.1 Hong Kong Academy of Medicine Position Statement on Artificial Intelligence in Medical Education</b> Prof Clement THAM Chee-yung, Vice President, Education and Examination, Hong Kong Academy of Medicine, Hong Kong, China</p> <p><b>SS4.2 Challenges and Opportunities in Postgraduate Medical Education, Canadian Perspectives</b> Prof Marcello TONELLI, Professor, Department of Medicine, University of Calgary, Canada</p> <p><b>SS4.3 The Innovator and Implementer – Beyond the Bot: Integrating Simulation and Immersive Technologies in Medical Education</b> Dr SO Hing-yu, Honorary Consultant, Quality and Safety Division, New Territories East Cluster, Hong Kong, China</p> <p><b>SS4.4 Educating Clinicians: Navigating Well-being, Professional Identity, and Adaptive Assessment in Modern Training</b> Dr LEUNG Wing-cheong, Consultant, Department of Obstetrics and Gynaecology, Kwong Wah Hospital, Hong Kong, China</p> <p><b>SS4.5 Panel Discussion</b></p>
1615 – 1630	<b>Break</b>
1630 – 1745	<p><b>^# Symposium 3 – Preparedness of Major Events</b> <span style="float: right;"><b>S3</b></span></p> <p><b>Chairperson:</b> Mr Henry TONG Sau-chai, Board Member, Hospital Authority, Hong Kong, China</p> <p><b>S3.1 Medical Preparedness for the FIFA World Cup 2022, Qatar</b> Prof Azhar ABDUL AZIZ, Senior Consultant, Emergency Department, Hamad Medical Corporation, Qatar</p> <p><b>S3.2 Medical Support for Horseracing in Hong Kong</b> Dr Clara WU Wing-yee, Head of Chief Medical Officer Team, The Hong Kong Jockey Club; President, Hong Kong College of Emergency Medicine, Hong Kong, China</p> <p><b>S3.3 Framing the Medical Support for Major Events</b> Mr Andy KUNG Chak-man, Senior Manager, Department of Infection, Emergency and Contingency, Head Office, Hospital Authority, Hong Kong, China</p>

^ Simultaneous interpretation (English/Putonghua) is available at this venue # Sessions will be available online

1330 – 1445	<p><b>Special Session 1 – Empowering Nursing Leadership for Advancing Excellence in Nursing Practice</b> <b>SS1</b></p> <p><b>Chairperson: Prof Janet WONG</b>, Board Member, Hospital Authority, Hong Kong, China</p> <p><b>SS1.1 Transformational Leadership in Nursing: Preparing for Future Healthcare Development</b> Prof Sophia CHAN Siu-chee, Senior Advisor, President’s Office; Professor and Director, HKU Primary Health Care Academy; Professor, Division of Community Medicine and Public Health Practice, The University of Hong Kong, Hong Kong, China</p> <p><b>SS1.2 Leadership in Nursing: Fostering a Culture of Credibility</b> Dr Danny TONG Wah-kun, Chief Manager, Nursing Services Department; Chief Nurse Executive, Nursing Services Department, Head Office, Hospital Authority, Hong Kong, China</p> <p><b>SS1.3 Patient Involvement and Engagement: An Open Invitation to Nurses</b> Prof Janelle YORKE, Head and Chair Professor, School of Nursing, The Hong Kong Polytechnic University, Hong Kong, China</p>
1445 – 1500	<b>Break</b>
1500 – 1615	<p><b>Parallel Session 1 – Co-creating Health Solutions</b> <b>PS1</b></p> <p><b>Chairperson: Dr Eric CHEUNG</b>, Cluster Chief Executive, Kowloon Central Cluster, Hong Kong, China</p> <p><b>PS1.1 How Artificial Intelligence Search Is Becoming the Fastest Adopted Technology by Clinicians</b> Dr Keith TSUI, Chief Executive Officer and Co-Founder, Medwise AI Ltd, The United Kingdom</p> <p><b>PS1.2 Connecting Care Empowering Health – Tencent’s Innovation in Healthcare</b> Ms WANG Qianyi, General Manager of Strategy and Medical Product, Tencent Healthcare, China</p> <p><b>PS1.3 Collaborative Generative Artificial Intelligence (Co-GenAI): A Novel Fusion-driven Framework</b> Prof YANG Hongxia, Chair Professor, Department of Computing, The Hong Kong Polytechnic University, Hong Kong, China</p>
1615 – 1630	<b>Break</b>
1630 – 1745	<p><b>Symposium 4 – Strategic Conglomeration of Global Talents</b> <b>S4</b></p> <p><b>Chairperson: Dr Catherine CHONG</b>, Chief Manager (Medical Grade), Head Office, Hospital Authority, Hong Kong, China</p> <p><b>S4.1 Smart Integrated Telementoring and Research Endoscopic Operating Room</b> Dr CAI Mingyan, Associate Professor, Endoscopy Center, Zhongshan Hospital Fudan University, China</p> <p><b>S4.2 An Interventional Radiologist Abroad: Finding the Right Path When the Map Is Unfamiliar</b> Dr LOI Kai-seng, Fellow in Interventional Radiology, National Cancer Institute, Malaysia</p> <p><b>S4.3 Advancing Orthopaedic Specialist Training in the Chinese Mainland: Hong Kong’s Role as the “Super Connector”</b> Dr WUN Yiu-chung, Deputy Hospital Chief Executive, Tuen Mun Hospital, Hong Kong, China</p>

1330 – 1445	<p><b>Special Session 2 – Research Excellence and Innovation at CUHK Medicine</b> <span style="float: right;"><b>SS2</b></span></p> <p><b>Chairperson: Dr Ada YU Hoi-yan</b>, Hospital Chief Executive, Bradbury Hospice, Cheshire Home Shatin and Shatin Hospital, Hong Kong, China</p> <p><b>SS2.1 Using Data to Transform Diabetes Care and Patient Lives</b> Prof Ronald MA Ching-wan, S.H. Ho Professor of Diabete, Department of Medicine and Therapeutics, Prince of Wales Hospital, Hong Kong, China</p> <p><b>SS2.2 Novel Treatment Concept for Liver Cancer</b> Prof Stephen CHAN Lam, Professor, Department of Clinical Oncology, The Chinese University of Hong Kong, Hong Kong, China</p> <p><b>SS2.3 Innovation in Diagnosis and Treatment of Aortic Diseases</b> Prof Randolph WONG Hung-leung, Professor and Chief, Division of Cardiothoracic Surgery, Department of Surgery, The Chinese University of Hong Kong, Hong Kong, China</p>
1445 – 1500	<b>Break</b>
1500 – 1615	<p><b>Special Session 5 – Striving for Clinical Excellence in HKUMed – Presentations by Recipients of the 2025 Faculty Clinical Service Excellence Award</b> <span style="float: right;"><b>SS5</b></span></p> <p><b>Chairperson: Prof Victoria WONG</b>, Associate Dean (Clinical Affairs), Director of HKU Health System, Li Ka Shing Faculty of Medicine, The University of Hong Kong, Hong Kong, China</p> <p><b>SS5.1 Hong Kong Paediatric Neuromuscular Disorders Excellence Programme</b> Dr Sophelia CHAN Hoi-shan, Clinical Associate Professor, Department of Paediatrics and Adolescent Medicine, School of Clinical Medicine, The University of Hong Kong; Honorary Consultant, Department of Neurosurgery, Hong Kong Children’s Hospital, Queen Mary Hospital and The Duchess of Kent Children’s Hospital, Hong Kong, China</p> <p><b>SS5.2 Excellence in Action: How Teamwork Transformed Stroke Care at Queen Mary Hospital</b> Dr Kevin CHENG King-fai, Chief of Service, Department of Neurosurgery, Queen Mary Hospital, Hong Kong, China</p> <p><b>SS5.3 A Physician Ambassador for Neuro-Oncology Patients: Establishing a Service of Excellence at HKUMed</b> Prof Aya EL HELALI, Clinical Assistant Professor, Department of Clinical Oncology, The University of Hong Kong, Hong Kong, China</p> <p><b>SS5.4 The Unbreakable Will: The Path to Recovery after Spinal Cord Injury</b> Dr Paul Aarne KOLJONEN, Deputy Hospital Chief Executive, Queen Mary Hospital; Consultant, Department of Orthopaedics and Traumatology, Queen Mary Hospital, Hong Kong, China</p> <p><b>SS5.5 Breaking Barriers: Improving Lives of People Living with Chronic Liver Disease</b> Dr Loey MAK Lung-yi, Clinical Assistant Professor, Department of Medicine, The University of Hong Kong; Honorary Associate Consultant (Medicine), Queen Mary Hospital, Hong Kong, China</p>
1615 – 1630	<b>Break</b>
1630 – 1745	<p><b>@ Symposium 5 – Updates on Hospital Accreditation and Development of Single Disease and Clinical Pathway</b> <span style="float: right;"><b>S5</b></span></p> <p><b>Chairperson: Dr Jeffrey LAI</b>, Chief Assistant Secretary for Health 2, Health Bureau, The Government of the Hong Kong Special Administrative Region, China</p> <p><b>S5.1 Shaping China’s International Hospital Accreditation Standards for Modern Hospital Management</b> Prof Anne LEE, Director, Head Office and Hong Kong Office, Shenzhen Hospital Accreditation Research Centre (SHARC), China</p> <p><b>S5.2 Leveraging Hospital Accreditation to Drive High-quality Development</b> Dr Linda YU Wai-ling, Service Director, Department of Quality and Safety, New Territories East Cluster, Hong Kong, China</p> <p><b>S5.3 Single-disease and Clinical Path Management</b> Dr WANG Hui-ying, Medical Superintendent, Huashan Hospital, Fudan University, China</p>

1330 – 1445	<p><b>Special Session 3 – Clinical Excellence – Winning Presentations from Hong Kong Academy of Medicine Colleges I</b> <span style="float: right;"><b>SS3</b></span></p> <p><b>Chairperson: Dr TANG Kam-shing</b>, Hospital Chief Executive, Kwong Wah Hospital, Hong Kong, China</p> <p><b>SS3.1 Does Local Excision Alone without Salvage Surgery Affect the Prognostic Outcome of Patients with Malignant Colorectal Polyp? A Long-term Survival Analysis</b> Dr Vienna NG Man-wah, Associate Consultant, Department of Surgery, Prince of Wales Hospital, Hong Kong, China</p> <p><b>SS3.2 Upper Limb Necrotising Fasciitis – A 20-year Review</b> Dr TSUI Hon-yeung, Resident Trainee, Department of Orthopaedics, United Christian Hospital, Hong Kong, China</p> <p><b>SS3.3 Ultrasound Assessment of Progress in Labour: A Feasibility Study</b> Dr Nikki LEE May-wing, Specialist, Obstetrics and Gynaecology, Central Health Medical Practice, Hong Kong, China</p>
1445 – 1500	<b>Break</b>
1500 – 1615	<p><b>Special Session 6 – Clinical Excellence – Winning Presentations from Hong Kong Academy of Medicine Colleges II</b> <span style="float: right;"><b>SS6</b></span></p> <p><b>Chairperson: Dr Tony CHAN</b>, Deputy Hospital Chief Executive, Pok Oi Hospital, Hong Kong, China</p> <p><b>SS6.1 Transversus Thoracis Muscle Plane Block for Acute and Chronic Pain Management in Cardiac Surgical Patients for Sternotomy: A Prospective Randomised Controlled Trial</b> Dr Geoffrey TANG Chi-chun, Associate Consultant, Department of Anaesthesia, Pain and Perioperative Medicine, Prince of Wales Hospital, Hong Kong, China</p> <p><b>SS6.2 Smartphone-based Personal Sound Amplification Product on Self-perceived Communication Function in Older Adults with Hearing Loss: A Randomised Controlled Trial</b> Dr Adam CHAN Chun-hang, Resident, Department of Otorhinolaryngology, Head and Neck Surgery, Queen Elizabeth Hospital, Hong Kong, China</p> <p><b>SS6.3 Determinants of Treatment Burden in Older Adults with Multimorbidity: A Territory-wide, Cross-sectional Study Across 19 Centers in Hong Kong</b> Dr Johnny CHEUNG Tsz-king, Medical Officer, Department of Family Medicine, New Territories East Cluster, Hong Kong, China</p>
1615 – 1630	<b>Break</b>
1630 – 1745	<p><b>Special Session 8 – Innovation for Advanced Nursing Care I</b> <span style="float: right;"><b>SS8</b></span></p> <p><b>Chairperson: Mr Eric S K TANG</b>, Deputising Senior Manager (Nursing)/Principal Nursing Officer, Head Office, Hospital Authority, Hong Kong, China</p> <p><b>SS8.1 Journey Mapping to Explore the Adaptability of Junior Nurses to Clinical Practice: A Qualitative Study</b> Mr CHAN Ching-sum, Ward Manager, Department of Intensive Care Unit, Ruttonjee and Tang Shiu Kin Hospitals, Hong Kong, China</p> <p><b>SS8.2 Evaluating the Impact of Multicomponent Education on Nurses' Knowledge, Attitudes and Practices of Physical Restraint Use in Acute Care Setting: A Pilot Study</b> Ms Winnie KWAN Wai-yan, Advanced Practice Nurse in-Charge, Infection Control Team, Tseung Kwan O Hospital, Hong Kong, China</p> <p><b>SS8.3 Application of Implementation Science – PEDALs Model to Drive Changes: The Roll Out of Electronic Intake and Output (e-I&amp;O) System in 4 Public Hospitals in Hong Kong</b> Mr PUN Kwong-lik, Senior Nursing Officer, Nursing Services Division, Tung Wah Eastern Hospital, Hong Kong, China</p>

1330 – 1445	<p><b>Masterclass 1 – Recent Advances in Hospital Authority Gastrointestinal Services</b> <span style="float: right;"><b>M1</b></span></p> <p><b>Chairperson:</b> Dr SO Wing-ye, Hospital Chief Executive, North District Hospital, Hong Kong, China</p> <p><b>M1.1 Faecal Microbiota Transplant</b> Dr Rashid LUI, Associate Professor of Practice in Gastroenterology, Hepatology and Medical Oncology, Department of Medicine and Therapeutics, Faculty of Medicine, The Chinese University of Hong Kong, Hong Kong, China</p> <p><b>M1.2 Clinical Application of Intestinal Ultrasound in Inflammatory Bowel Disease</b> Dr MAK Wing-yan, Consultant, Department of Medicine and Therapeutics, Prince of Wales Hospital, Hong Kong, China</p> <p><b>M1.3 Advance in Hepatitis B Treatment</b> Dr Loey MAK Lung-yi, Clinical Assistant Professor, Department of Medicine, The University of Hong Kong; Honorary Associate Consultant (Medicine), Queen Mary Hospital, Hong Kong, China</p> <p><b>M1.4 Inflammatory Bowel Disease Smart Care: An Electronic Patient-reported Outcome Measures-based Telehealth Model for Inflammatory Bowel Disease</b> Dr Edmund WU Siu-to, Associate Consultant, Department of Medicine and Geriatrics, Princess Margaret Hospital, Hong Kong, China</p>
1445 – 1500	<b>Break</b>
1500 – 1615	<p><b>Masterclass 2 – A Dot in the Lung: What Does It Mean and What Should We Do?</b> <span style="float: right;"><b>M2</b></span></p> <p><b>Chairperson:</b> Dr CHAN Ngai-yin, Deputy Hospital Chief Executive (Clinical Services) and Consultant (Medicine and Geriatrics), Princess Margaret Hospital, Hong Kong, China</p> <p><b>M2.1 Application of Artificial Intelligence in Assessment of Pulmonary Nodule</b> Dr KWOK Kai-yan, Chief of Service, Department of Radiology and Nuclear Medicine, Tuen Mun Hospital, Hong Kong, China</p> <p><b>M2.2 The Diagnostic Approach to Pulmonary Nodule: Surveil? Biopsy? Resect?</b> Dr KWAN Hoi-ye, Chief of Service, Department of Respiratory Medicine, Kowloon Hospital, Hong Kong, China</p> <p><b>M2.3 Advances in Diagnostic and Therapeutic Strategies for Pulmonary Nodules</b> Prof Calvin NG Sze-hang, Environmental Foundation Professor of Thoracic Surgery, Department of Surgery, The Chinese University of Hong Kong, Hong Kong, China</p> <p><b>M2.4 From Chest X-Ray to Computed Tomography: Lung Cancer Screening</b> Dr David LAM Chi-leung, Honorary Consultant (QMH MED), Department of Medicine, Queen Mary Hospital; Clinical Associate Professor (HKUMed), Department of Medicine, The University of Hong Kong, Hong Kong, China</p>
1615 – 1630	<b>Break</b>
1630 – 1745	<p><b>Masterclass 3 – Neurosurgery Advancement through Hospital Authority Mechanism for the Safe Introduction of New Procedure/Technology</b> <span style="float: right;"><b>M3</b></span></p> <p><b>Chairperson:</b> Dr Danny CHAN Tat-ming, Deputy Service Director (Quality and Safety), New Territories East Cluster; Chief of Service (Neurosurgery), Prince of Wales Hospital, Hong Kong, China</p> <p><b>M3.1 The Gift of Breathing: The Story of Diaphragmatic Pacing</b> Dr David CHAN Yuen-chung, Consultant, Department of Neurosurgery, Prince of Wales Hospital, Hong Kong, China</p> <p><b>M3.2 Magnetic Resonance Imaging Guided Laser Interstitial Thermal Therapy (LITT)</b> Dr LI Lai-fung, Consultant, Department of Neurosurgery, Queen Mary Hospital, Hong Kong, China</p> <p><b>M3.3 Robotic Neurosurgery Stereoelectro-encephalography (SEEG)</b> Dr Michael SEE, Associate Consultant, Department of Neurosurgery, Queen Elizabeth Hospital, Hong Kong, China</p> <p><b>M3.4 The Evolution of Deep Brain Stimulation for Drug Resistant Epilepsy in Hong Kong</b> Dr POON Tak-lap, Chief of Service, Department of Neurosurgery; Consultant Neurosurgeon, Department of Neurosurgery, Queen Elizabeth Hospital, Hong Kong, China</p>

1330 – 1445	<p><b>Symposium 2 – The Future of Structural Heart Disease Programme</b> <span style="float: right;">S2</span></p> <p><b>Chairperson: Dr Chris TSANG Chi-chung</b>, Chief Manager (Integrated Clinical Services), Hospital Authority, Hong Kong, China</p> <p><b>S2.1 Preparing for the Tsunami of Structural Heart Interventions: Perspectives from a Clinician and Hospital Administrator</b> Prof YEO Khung-keong, Chief Executive Officer, National Heart Centre Singapore, Singapore</p> <p><b>S2.2 The Future of Structural Heart Disease Programme: Where Are We Now? The Hong Kong and Greater Bay Area Perspective</b> Prof SO Chak-yu, Clinical Assistant Professor, Department of Medicine and Therapeutics, The Chinese University of Hong Kong, Hong Kong, China</p> <p><b>S2.3 How Imaging and Heart Failure Programme Contribute to the Structural Heart Tsunami?</b> Dr Kevin KAM, Consultant Cardiologist, Department of Medicine and Therapeutics, Division of Cardiology, Prince of Wales Hospital, Hong Kong, China</p>
1445 – 1500	<b>Break</b>
1500 – 1615	<p><b>Special Session 7 – Primary Health Care in Hong Kong</b> <span style="float: right;">SS7</span></p> <p><b>Chairperson: Dr PANG Fei-chau</b>, Commissioner for Primary Healthcare, Hong Kong, China</p> <p><b>SS7.1 Continuity of Care – A Hallmark of Quality Primary Care</b> Prof Cindy LAM Lo-kuen, Emeritus Professor, Department of Family Medicine and Primary Care, The University of Hong Kong, Hong Kong, China</p> <p><b>SS7.2 Translating Evidence to Primary Healthcare Policy</b> Prof Samuel WONG Yeung-shan, Professor and Director, The Jockey Club School of Public Health and Primary Care, The Chinese University of Hong Kong, Hong Kong, China</p> <p><b>SS7.3 Evolutionary Changes in Family Medicine from a Corporate Wide Perspective</b> Dr Maria LEUNG Kwan-wa, Chief Manager (Primary and Community Services), Division of Strategy and Planning, Head Office, Hospital Authority, Hong Kong, China</p>
1615 – 1630	<b>Break</b>
1630 – 1745	<p><b>Special Session 9 – Health and Medical Research Fund: Be the Catalyst in Research Collaboration and Translation in Hospital Authority</b> <span style="float: right;">SS9</span></p> <p><b>Chairperson: Prof LEUNG Wai-keung</b>, Chair Professor of Gastrointestinal Medicine, School of Clinical Medicine, Department of Medicine, The University of Hong Kong, Hong Kong, China</p> <p><b>SS9.1 Translating Research into Real-world Impact: A Randomised Control Trial of SIM01 for Post-acute COVID-19 Syndrome</b> Prof NG Siew-chien, Associate Dean (Research), Croucher Professor in Medical Sciences, Professor of Faculty of Medicine, Department of Medicine and Therapeutics, The Chinese University of Hong Kong, Hong Kong, China</p> <p><b>SS9.2 Translating Health and Medical Research Fund (HMRF) Funding into Career Advancement and Clinical Change in Reproductive Medicine</b> Dr Jacqueline CHUNG, Associate Professor, Department of Obstetrics and Gynaecology, The Chinese University of Hong Kong, Hong Kong, China</p> <p><b>SS9.3 Synergistic Advancements of Blood Cancer Research and Genomic Services in Hospital Authority Empowered by Health and Medical Research Fund Initiatives</b> Dr IP Ho-wan, Consultant, Department of Pathology, Queen Mary Hospital, Hong Kong, China</p> <p><b>SS9.4 Collaborating for Better Survivorship Care in Young Individuals with Cancer: Reflections on Our Shared Journey</b> Prof CHEUNG Yin-ting, Associate Professor, School of Pharmacy, Faculty of Medicine, The Chinese University of Hong Kong, Hong Kong, China</p>

0900 – 1030	^# Plenary IV – Advance Care Planning and Advance Medical Directive	P4
	<p><b>Chairperson: Mr JAT Sew-tong</b>, Board Member, Hospital Authority, Hong Kong, China</p> <p><b>*P4.1 Strategies to Promote Living Will in Chinese Culture 在中國文化視角下推廣生前預囑的策略</b>  <b>Prof LI Ying</b>, President, Shenzhen Living Will Promotion Association, China          深圳市生前預囑推廣協會李瑛會長</p> <p><b>P4.2 The Advance Decision on Life-sustaining Treatment (ADLST) Ordinance: Challenges that Follow</b>  <b>Dr Doris TSE</b>, Consultant, Department of Medicine and Geriatrics, Caritas Medical Centre, Hong Kong, China</p> <p><b>P4.3 Advance Medical Directive in Hong Kong: A Legal Perspective</b>  <b>Ms Jaime LAM Chui-ye</b>, Partner, Healthcare Team, Johnson Stokes and Master, Hong Kong, China</p> <p><b>P4.4 Advance Medical Directive and Advance Care Planning – The Singapore Experience</b>  <b>Dr KOH Lip-hoe</b>, Senior Consultant, Department of Geriatric Medicine and Palliative Medicine, Changi General Hospital, Singhealth, Singapore</p>	
1030 – 1050	Break	
1050 – 1220	^# Plenary V – Surfing on the Next Wave of Pandemic	P5
	<p><b>Chairperson: Dr Thomas TSANG Ho-fai</b>, Board Member, Hospital Authority, Hong Kong, China</p> <p><b>P5.1 Automated Surveillance Systems and Data-driven Infection Monitoring in Hospital</b>  <b>Prof Michael KLOMPAS</b>, Professor of Population Medicine, Harvard Pilgrim Healthcare, Harvard Medical School, The United States of America</p> <p><b>P5.2 Optimise Country's System Readiness for Global Public Health Security</b>  <b>Dr XU Zhen</b>, Deputy Director, Center For Global Health, Chinese Center for Disease Control and Prevention, China</p> <p><b>P5.3 Impact of World Health Organisation Pandemic Agreement 2025</b>  <b>Prof CHUNG Pui-hong</b>, BAsC (Global Health and Development) Programme Director; Assistant Dean (Health Sciences Admissions) and Clinical Associate Professor of Practice, Division of Community Medicine and Public Health Practice, Li Ka Shing Faculty of Medicine, The University of Hong Kong, Hong Kong, China</p>	
1220 – 1330	Break	

^ Simultaneous interpretation (English/Putonghua) is available at this venue \* Presentation in Putonghua # Sessions will be available online

1330 – 1500	<p data-bbox="308 188 866 219"><b>^# Plenary VI – Integrated Oncology and Palliative Care</b></p> <p data-bbox="1497 188 1536 219"><b>P6</b></p> <p data-bbox="308 257 1485 288"><b>Chairperson: Dr Michael WONG Lap-gate</b>, Director (Quality and Safety), Head Office, Hospital Authority, Hong Kong, China</p> <p data-bbox="308 309 1525 400"><b>P6.1 Integration of Palliative Care with Oncology for Comprehensive Cancer Care</b> Dr Camilla ZIMMERMANN, Head and Lederman Chair, Department of Supportive Care, Princess Margaret Cancer Centre, University Health Network, Canada</p> <p data-bbox="308 423 1305 515"><b>P6.2 Early Palliative Care in Oncology</b> Dr Angela HALLEY, Consultant in Palliative Medicine, Symptom Control and Palliative Care Team, The Royal Marsden National Health Service Foundation Trust, The United Kingdom</p> <p data-bbox="308 537 1315 600"><b>P6.3 Molecular Science in the Era of “Healthy China”</b> Prof TAN Waihong, Director, Hangzhou Institute of Medicine, Chinese Academy of Sciences, China</p>
1500 – 1530	Break
1530 – 1700	<p data-bbox="308 707 995 739"><b>^# Plenary VII – Technology Advancement and Service Development</b></p> <p data-bbox="1497 707 1536 739"><b>P7</b></p> <p data-bbox="308 777 1137 808"><b>Chairperson: Mr WAN Man-yee</b>, Board Member, Hospital Authority, Hong Kong, China</p> <p data-bbox="308 828 1362 891"><b>P7.1 Challenges and Opportunities in Implementing Artificial Intelligence in Smart Hospitals</b> Prof NGIAM Kee-yuan, Head, Artificial Intelligence Office, National University Health System, Singapore</p> <p data-bbox="308 913 1485 1005"><b>P7.2 From Opacity to Restoration: Advancing Keratoprosthesis Surgery</b> Prof Christopher LIU Swee-chau, Lead Consultant (Ophthalmology Services), Department of Quality and Standards, Quality and Safety Division, Head Office, Hospital Authority, Hong Kong, China</p>

^ Simultaneous interpretation (English/Putonghua) is available at this venue # Sessions will be available online

0900 – 1030	<p><b>^# Parallel Session 2 – Bridging the Gap: Research to Practice</b> <span style="float: right;"><b>PS2</b></span></p> <p><b>Chairperson: Dr Tony HA</b>, Director (Strategy and Planning), Hospital Authority, Hong Kong, China</p> <p><b>PS2.1 Going Founder Mode on Cancer – the Futuristic Case Study of Sid Sijbrandij</b> Dr Keith TSUI, Chief Executive Officer and Co-Founder, Medwise AI Ltd, The United Kingdom</p> <p><b>PS2.2 From Lab, Technology to Incision: Minimally Invasive Skull Base Neurosurgery Unlocked</b> Dr Calvin MAK Hoi-kwan, Chairman, Kowloon Central Cluster Innovation Committee; Deputy Chief of Service and Consultant (Neurosurgery), Queen Elizabeth Hospital, Hong Kong, China</p> <p><b>PS2.3 Territory-wide Deployment of an Electronic Health Record-integrated Hip Fracture Detection Model: Diagnostic Performance, Clinician Interaction, and Health-system Operational Associations</b> Dr Keith CHIU Wan-hang, Consultant, Department of Diagnostic and Interventional Radiology (DIR), Queen Elizabeth Hospital, Hong Kong, China</p>
1030 – 1050	Break
1050 – 1220	<p><b>^# Symposium 8 – Personalised and Patient-centric Management in Cardiovascular Medicine</b> <span style="float: right;"><b>S8</b></span></p> <p><b>Chairperson: Dr WONG Yiu-chung</b>, Director (Cluster Services), Hospital Authority, Hong Kong, China</p> <p><b>S8.1 Holistic and Patient-based Management in Heart Failure</b> Dr CHAN Ngai-yin, Director (Cardiology), Kowloon West Cluster; Deputy Hospital Chief Executive (Clinical Services) and Consultant (Medicine and Geriatrics), Princess Margaret Hospital, Hong Kong, China</p> <p><b>S8.2 Smart Risk Assessment for Smarter Heart Care: P-CARDIAC</b> Prof Celine CHUI, Assistant Professor, School of Nursing, The University of Hong Kong, Hong Kong, China</p> <p><b>S8.3 Current and Future Artificial Intelligence Application in Cardiovascular Medicine</b> Prof Alex LEE Pui-wai, Professor, Department of Medicine and Therapeutics, Faculty of Medicine, The Chinese University of Hong Kong, Hong Kong, China</p>
1220 – 1330	Break

^ Simultaneous interpretation (English/Putonghua) is available at this venue # Sessions will be available online

1330 – 1500	<p><b>^# Symposium 11 – Artificial Intelligence and Health Medicine</b> <span style="float: right;"><b>S11</b></span></p> <p><b>Chairperson: Prof David SHUM Ho-keung</b>, Board Member, Hospital Authority, Hong Kong, China</p> <p><b>S11.1 Distributed Generative Artificial Intelligence: Reshaping the Future of Medical Intelligence</b>  <b>Prof YANG Hongxia</b>, Chair Professor, Department of Computing, The Hong Kong Polytechnic University, Hong Kong, China</p> <p><b>S11.2 Development and Deployment of Artificial Intelligence Techniques in Clinical Workflow</b>  <b>Prof SHEN Dinggang</b>, Professor, School of Biomedical Engineering, ShanghaiTech University, China</p>
1500 – 1530	Break
1530 – 1700	<p><b>^# Symposium 14 – End-of-Life Care (EOL) in Residential Care Homes for Elderly (RCHE)</b> <span style="float: right;"><b>S14</b></span></p> <p><b>Chairperson: Dr CHAN Tak-yeung</b>, Deputy Chief of Service, Department of Medicine and Geriatrics, Kwong Wah Hospital, Hong Kong, China</p> <p><b>S14.1 Developing End-of-Life Care in Residential Care Home for the Elderly in Hong Kong</b>  <b>Dr FUNG Sze-yuen</b>, Deputy Chief of Service, Department of Medicine and Geriatrics; Division Head of Geriatric Medicine, Department of Medicine and Geriatrics, United Christian Hospital, Hong Kong, China</p> <p><b>S14.2 Community Support for End-of-Life Care and Dying in Place in Residential Care Homes for Elderly</b>  <b>Dr Bernard KONG Ming-hei</b>, Hong Kong Sheng Kung Hui Nursing Home, Hong Kong, China</p> <p><b>S14.3 Strengthening End-of-Life Care in Nursing Homes: An Empowerment-based Capacity-building Model</b>  <b>Prof WANG Ying-wei</b>, Consultant, Dean's Office, Hualien Tzuchi Hospital, Taiwan, China</p> <p><b>S14.4 Panel Discussion</b>  <b>All speakers and Dr Daniel YUK Ka-lok</b>, Consultant, Department of Medicine and Geriatrics, Shatin Hospital, Hong Kong, China</p>

^ Simultaneous interpretation (English/Putonghua) is available at this venue # Sessions will be available online

0900 – 1030	<p><b>^# Symposium 6 – Advancements in Stroke Service</b> <span style="float: right;"><b>S6</b></span></p> <p><b>Chairperson: Dr David SUN Tin-fung</b>, Head of Hospital Authority Academy, Hong Kong, China</p> <p><b>S6.1 Recent Advances in Hyperacute Stroke Care</b> Dr MA Sze-ho, Consultant, Department of Medicine and Therapeutics, Prince of Wales Hospital, Hong Kong, China</p> <p><b>*S6.2 Clinical Applications of Ultra-low Field Moving Magnetic Resonance Imaging 超低場移動磁共振的臨床應用</b> <b>Prof JING Jing</b>, Doctor, Department of Neurology, Beijing Tiantan Hospital, Capital Medical University, China 首都醫科大學附屬北京天壇醫院神經病學中心主任醫師荆京教授</p> <p><b>S6.3 From Stroke Care to Brain Care</b> <b>Prof Thomas LEUNG Wai-hong</b>, Professor, Department of Medicine and Therapeutics, Prince of Wales Hospital, Hong Kong, China</p>
1030 – 1050	Break
1050 – 1220	<p><b>^# Parallel Session 4 – Value-based Care</b> <span style="float: right;"><b>PS4</b></span></p> <p><b>Chairperson: Mr Philip TSAI</b>, Chairman, Hospital Governing Committee, Queen Mary Hospital and Tsan Yuk Hospital, Hong Kong, China</p> <p><b>PS4.1 Smarter Testing, Better Care: A Scalable Model for High-value Practice</b> Dr Brian O’CONNELL, Senior Staff Specialist, Emergency Medicine, Coffs Harbour Emergency Department, MNCLHD; State Medical Lead, Net Zero Emergency Departments Hub, Climate Risk Net Zero Unit, Ministry of Health, New South Wales Health, Australia</p> <p><b>PS4.2 Driving Value through Healthcare Innovation</b> <b>Prof Eugene Fidelis SOH</b>, Deputy Group Chief Executive Officer, Population Health, National Healthcare Group, Singapore</p> <p><b>PS4.3 Cost-effectiveness as a Path to Sustainable and Fair Healthcare</b> <b>Prof Manuel ESPINOZA</b>, Associate Professor, School of Public Health, The University of Hong Kong, Hong Kong, China</p>
1220 – 1330	Break

^ Simultaneous interpretation (English/Putonghua) is available at this venue \* Presentation in Putonghua # Sessions will be available online

1330 – 1500	<p data-bbox="312 188 916 219">^# Parallel Session 6 – Integrated Pathways for Chronic Care <span style="float: right;">PS6</span></p> <p data-bbox="312 255 1323 286"><b>Chairperson: Dr Anna TONG</b>, Chief Manager (eHealth), Head Office, Hospital Authority, Hong Kong, China</p> <p data-bbox="312 309 1485 367"><b>*PS6.1 Artificial Intelligence Collaboration Empowers Primary Healthcare Institutions Enhance Precision Healthcare Capabilities</b> 人工智能協同賦能基層醫療機構，強化精準醫療綜合服務能力</p> <p data-bbox="387 405 1374 463"><b>Mr Lynn LIN</b>, Healthcare BU (Western) Industry Solutions Architect, Huawei Technologies Co., Ltd., China 華為技術有限公司醫療衛生軍團（西）行業解決方案架構師林靖皓先生</p> <p data-bbox="323 488 815 519"><b>PS6.2 Medical Robotics – the Present and Future</b> <b>Prof LIU Hongbin</b>, Professor and Director, Centre for AI and Robotics, Hong Kong Institute of Science and Innovation, Chinese Academy of Sciences, Hong Kong, China</p> <p data-bbox="323 602 1434 660"><b>PS6.3 Everyday, Everywhere, Everyone – Transforming Innovation into Better Patient Outcome in Community Rehabilitation</b> <b>Ms Eva MA W L</b>, Centre Head, Community Rehabilitation Service Support Centre (CRSSC), Hospital Authority, Hong Kong, China</p>
1500 – 1530	Break
1530 – 1700	<p data-bbox="312 835 1034 866">^# Symposium 15 – Technological Innovation in Hospital Constructions <span style="float: right;">S15</span></p> <p data-bbox="312 902 1201 934"><b>Chairperson: Ir John KWONG Ka-sing</b>, Board Member, Hospital Authority, Hong Kong, China</p> <p data-bbox="312 956 1099 987"><b>S15.1 The Hospital as Innovator: Proactive, Personalised and Interconnected</b> <b>Ms Abbie GALVIN</b>, New South Wales Government Architect, Department of Planning Housing and Infrastructure, New South Wales, Australia</p> <p data-bbox="312 1070 1485 1128"><b>S15.2 Building the Future of Healthcare: How the Centre Hospitalier Universitaire de Nantes Integrates Innovation, Sustainability, and Urban Synergy</b> <b>Mrs Laurence JAY-PASSOT</b>, Deputy Director General, Nantes University Hospital, France</p>

^ Simultaneous interpretation (English/Putonghua) is available at this venue \* Presentation in Putonghua # Sessions will be available online

0900 – 1030	<p><b># Symposium 7 – Advancing Cell and Gene Therapy under Current Regulatory Framework</b> <b>S7</b></p> <p><b>Chairperson: The Hon Duncan CHIU</b>, Chairman, Hospital Governing Committee, Kwai Chung Hospital and Princess Margaret Hospital, Hong Kong, China</p> <p><b>S7.1 The Complex and Evolving Issues on Cell and Gene Therapy Regulatory Framework</b>  <b>Prof Howard SHI Yuanyuan</b>, Professor, Integrated Chinese and Western Medicine Basic Research, Shenzhen Hospital, Beijing University of Chinese Medicine, China</p> <p><b>S7.2 Quality is the New Quantity: Scaling the Global Pharmaceutical Inspection Co-operation Scheme Standard to Define the Greater Bay Area’s Cell Gene Therapy Future</b>  <b>Dr Gina JIANG</b>, Managing Director, The Hong Kong Institute of Biotechnology Limited, Hong Kong, China</p> <p><b>S7.3 Advanced Therapy Products – The Regulatory Perspective</b>  <b>Mr Michael YIM Tsz-kok</b>, Chief Pharmacist (2), Drug Office, Department of Health, The Government of the Hong Kong Special Administrative Region, China</p>
1030 – 1050	<b>Break</b>
1050 – 1220	<p><b># Symposium 9 – Integration of Palliative Care for Patients with Cancer for Provision of Supportive Cancer Care</b> <b>S9</b></p> <p><b>Chairperson: Dr Annie KWOK</b>, Chief of Service (Medicine and Geriatrics / Intensive Care Unit), Caritas Medical Centre, Hong Kong, China</p> <p><b>S9.1 Symptom Screening with Targeted Early Palliative (STEP) Care for Patients with Advanced Cancer</b>  <b>Dr Camilla ZIMMERMANN</b>, Head and Lederman Chair, Department of Supportive Care, Princess Margaret Cancer Centre, University Health Network, Canada</p> <p><b>S9.2 Triggering Criteria and Other Initiatives at the Royal Marsden</b>  <b>Dr Angela HALLEY</b>, Consultant in Palliative Medicine, Symptom Control and Palliative Care Team, The Royal Marsden National Health Service Foundation Trust, The United Kingdom</p> <p><b>S9.3 Integration of Palliative Care for Patients with Cancer</b>  <b>Dr YUEN Kwok-keung</b>, Chief of Service, Department of Clinical Oncology, Queen Mary Hospital, Hong Kong, China</p>
1220 – 1330	<b>Break</b>

# Sessions will be available online

1330 – 1500	<p><b>#@ Symposium 12 – Transforming Concept into Reality in Hospital Constructions</b> <span style="float: right;"><b>S12</b></span></p> <p><b>Chairperson: Ir Kelvin LO Kwok-wah</b>, Director (Development and Works), Head Office, Hospital Authority, Hong Kong, China</p> <p><b>*S12.1 The Design Trends in Health-centered Hospital Architecture</b> 以健康為中心的醫療建築  <b>Prof HAO Xiaosai</b>, Professor, School of Architecture and Urban Planning, Beijing University of Civil Engineering and Architecture, China 北京建築大學建築與城市規劃學院郝曉賽教授</p> <p><b>*S12.2 Paradigm Iteration in Healthcare Architecture</b> 醫療保健架構中的範式反覆運算  <b>Mr XING Lihua</b>, Principal, Benyuan Healthcare Design Research Institute, Shenzhen General Institute of Architectural Design and Research CO.,LTD., China 深圳市建築設計研究總院有限公司本原醫療設計研究院邢立華院長</p> <p><b>*S12.3 An Exploration of Intelligent Generation and Optimisation Design of Comprehensive Hospital Architectural Floor Plans under the Background of Artificial Intelligence – Taking the Central Operating Room as an Example</b>          人工智慧背景下綜合醫院建築平面智慧化生成與優化設計的探索—以中心手術部為例  <b>Prof LONG Hao</b>, Head of the Department of Architecture, School of Architecture and Urban Planning, Chongqing University, China 重慶大學建築城規學院建築系系主任龍灝教授</p>
1500 – 1530	Break
1530 – 1700	<p><b># Special Session 11 – Advances in Health Technology</b> <span style="float: right;"><b>SS11</b></span></p> <p><b>Chairperson: Dr SIN Ngai-chen</b>, Hospital Chief Executive, Alice Ho Miu Ling Nethersole Hospital and Tai Po Hospital, Hong Kong, China</p> <p><b>SS11.1 Enhancing Home-based Rehabilitation through Locally Tailored Technological Innovations</b>  <b>Prof Kenneth FONG Nai-kuen</b>, Associate Dean of Graduate School; Associate Head, Department of Rehabilitation Sciences, The Hong Kong Polytechnic University, Hong Kong, China</p> <p><b>SS11.2 Robotics to Support Healthy Ageing</b>  <b>Dr Alex MIHAILIDIS</b>, Associate Vice President, International Partnerships; Professor, Institute of Biomedical Engineering, University of Toronto, Canada</p> <p><b>SS11.3 Wearable Robotics in Stroke Rehabilitation: Restoring Hand Function and Mobility</b>  <b>Prof Raymond TONG Kai-yu</b>, Professor, Department of Biomedical Engineering, The Chinese University of Hong Kong, Hong Kong, China</p>

\* Presentation in Putonghua # Sessions will be available online @ AI transcription (English/Traditional Chinese)

0900 – 1030	<p><b>Special Session 10 – Strategic Partnerships and Community Engagement for Addressing Key Determinants of Health</b> <span style="float: right;"><b>SS10</b></span></p> <p><b>Chairperson: Dr CHAN Kam-hoi</b>, Hospital Chief Executive, The Duchess of Kent Children’s Hospital at Sandy Bay, TWGHs Fung Yiu King Hospital and MacLehose Medical Rehabilitation Centre, Hong Kong, China</p> <p><b>SS10.1 Towards a Smoke-free Hong Kong: Strengthened Strategies for Tobacco Control</b> Dr Manny LAM Man-chung, Head, Tobacco and Alcohol Control Office, Department of Health, The Government of the Hong Kong Special Administrative Region, China</p> <p><b>SS10.2 Fostering Partnership in the Fight Against Antimicrobial Resistance: Why, What and How?</b> Dr Edmond MA Siu-keung, Consultant-in-Charge, Infectious Disease Control Training Centre (IDCTC), Hospital Authority, Hong Kong, China</p> <p><b>SS10.3 Intersectoral Collaboration in Promoting Weight Management</b> Dr Geeta SHARMA, Principal Medical and Health Officer (Disease Prevention), Department of Health, The Government of the Hong Kong Special Administrative Region, China</p>
1030 – 1050	<b>Break</b>
1050 – 1220	<p><b>Symposium 10 – Geriatric Fractures: Building Stronger Bones, Preserving Lives</b> <span style="float: right;"><b>S10</b></span></p> <p><b>Chairperson: Dr WUN Yiu-chung</b>, Deputy Hospital Chief Executive, Tuen Mun Hospital, Hong Kong, China</p> <p><b>S10.1 Update on the Management of Fragility Fractures</b> Dr LEE Kin-bong, Consultant, Department of Orthopaedics and Traumatology, Queen Elizabeth Hospital, Hong Kong, China</p> <p><b>S10.2 Update on the Management of Osteoporosis</b> Dr WONG Tin-wai, Consultant, Department of Medicine, Ruttonjee and Tang Shiu Kin Hospitals, Hong Kong, China</p> <p><b>S10.3 Fall in Geriatric Population</b> Dr CHAN Tuen-ching, Deputy Hospital Chief Executive; Chief of Service, Department of Medicine and Geriatrics, TWGHs Fung Yiu King Hospital, Hong Kong, China</p>
1220 – 1330	<b>Break</b>

1330 – 1500	<p><b>Symposium 13 – Innovations in Medical Training and Career Pathway</b> <span style="float: right;"><b>S13</b></span></p> <p><b>Chairperson: Dr Gladys KWAN Wai-man</b>, Hospital Chief Executive, Caritas Medical Centre, Hong Kong, China</p> <p><b>S13.1 Assistant Internship and Future Generation of Medical Graduates</b>  <b>Prof Pamela LEE Pui-wah</b>, Clinical Associate Professor, Department of Paediatrics and Adolescent Medicine, School of Clinical Medicine, The University of Hong Kong, Hong Kong, China</p> <p><b>S13.2 Dual Synergy: Hospital Authority and Academia for Impact</b>  <b>Dr HO Lap-tin</b>, Associate Consultant, Department of Intensive Care Unit, North District Hospital, Hong Kong, China</p> <p><b>S13.3 From Compliance to Adaptivity: Building a Safety Culture Through Education</b>  <b>Dr SO Hing-yu</b>, Honorary Consultant, Quality and Safety Division, New Territories East Cluster, Hong Kong, China</p>
1500 – 1530	Break
1530 – 1700	<p><b>Symposium 16 – Statistics and Data Science in Healthcare: Unlocking the Power of Data</b> <span style="float: right;"><b>S16</b></span></p> <p><b>Chairperson: Dr Pauline WOO</b>, Chief Health Statistician, Head Office, Hospital Authority, Hong Kong, China</p> <p><b>S16.1 Direct and Indirect Impact of COVID on Public Health</b>  <b>Prof Benjamin COWLING</b>, Chair of Epidemiology, School of Public Health, The University of Hong Kong, Hong Kong, China</p> <p><b>S16.2 Protection and Waning of Vaccine-induced, Natural and Hybrid Immunity to SARS-CoV-2 in Hong Kong</b>  <b>Prof LAM Kwok-fai</b>, Professor, Department of Population Health, School of Nursing and Health Sciences, Hong Kong Metropolitan University, Hong Kong, China</p> <p><b>S16.3 From Insight to Impact: Evidence-based Policy Formulation and Service Planning</b>  <b>Ms Eva TSUI</b>, Chief Data Scientist, Research and Data Analytics Office, Health Bureau, The Government of the Hong Kong Special Administrative Region, China</p>

0900 – 1030	<p><b>Masterclass 4 – Postpartum Haemorrhage – An Update</b> <span style="float: right;"><b>M4</b></span></p> <p><b>Chairperson: Dr LAU Chu-leung</b>, Hospital Chief Executive, Pok Oi Hospital and Tin Shui Wai Hospital, Hong Kong, China</p> <p><b>M4.1 Update on the Incidence of Postpartum Haemorrhage after One Year of Universal Carbetocin for All Caesarean Sections in Hospital Authority</b> Dr LEUNG Wing-cheong, Consultant, Department of Obstetrics and Gynaecology, Kwong Wah Hospital, Hong Kong, China</p> <p><b>M4.2 Trend and Outcomes of Massive Primary Postpartum Haemorrhage: Impact of Second-line Therapies in a Hong Kong Tertiary Obstetric Unit</b> Dr Jack WONG Chun-kit, Associate Consultant, Department of Obstetrics and Gynaecology, Kwong Wah Hospital, Hong Kong, China</p> <p><b>M4.3 Patient Blood Management in Obstetrics</b> Dr LEE Cheuk-kwong, Chief Executive and Medical Director, Department of Chief Executive and Medical Director Office, Hong Kong Red Cross Blood Transfusion Service, Hong Kong, China</p>
1030 – 1050	<b>Break</b>
1050 – 1220	<p><b>Masterclass 6 – Novel Sonographic Techniques in Obstetrics and Gynaecology</b> <span style="float: right;"><b>M6</b></span></p> <p><b>Chairperson: Dr Teresa MA</b>, Chief of Service (Obstetrics and Gynaecology), Queen Mary Hospital, Hong Kong, China</p> <p><b>M6.1 Point of Care Ultrasound in Obstetric and Gynaecological Emergencies</b> Dr Samson LAU Chin-ho, Associate Consultant, Department of Obstetrics and Gynaecology, Kwong Wah Hospital, Hong Kong, China</p> <p><b>M6.2 Enhancing Patient Safety with Intrapartum Ultrasound at the Second Stage of Labour</b> Dr LAU Wai-lam, Chief of Service, Department of Obstetrics and Gynaecology, Kwong Wah Hospital, Hong Kong, China</p> <p><b>M6.3 High-Intensity Focused Ultrasound for Uterine Fibroids and Other Gynaecological Conditions</b> Dr Sonia KWOK Pui-kei, Associate Consultant, Department of Obstetrics and Gynaecology, Prince of Wales Hospital, Hong Kong, China</p>
1220 – 1330	<b>Break</b>

1330 – 1500	<p><b>Masterclass 8 – Synthetic Computed Tomography and Breast Cancer Care</b> <span style="float: right;"><b>M8</b></span></p> <p><b>Chairperson: Dr WONG Chi-sing</b>, Chief of Service (Oncology), Tuen Mun Hospital, Pok Oi Hospital and Tin Shui Wai Hospital, Hong Kong, China</p> <p><b>M8.1 To See What You Treat – Clinical Feasibility of Magnetic Resonance-only Radiotherapy Using Synthetic Computed Tomography</b>  <b>Dr Winnie YIP</b>, Consultant, Department of Clinical Oncology, Tuen Mun Hospital, Hong Kong, China  <b>Ms Jenna WU</b>, Physicist, Department of Clinical Oncology, Tuen Mun Hospital, Hong Kong, China</p> <p><b>M8.2 Less is More: The Promise of Ultra-hypofractionated and Partial Breast Radiotherapy</b>  <b>Dr Sung Inda SOONG</b>, Deputy Hospital Chief Executive, Pamela Youde Nethersole Eastern Hospital; Chief of Service and Consultant, Department of Clinical Oncology, Pamela Youde Nethersole Eastern Hospital, Hong Kong, China</p> <p><b>M8.3 Empowering Choices: BRCA, Genomic Testing and Personalised Therapy in Breast Cancer Care</b>  <b>Prof Ava KWONG</b>, Daniel C K Yu Professor in Breast Cancer Research, Department of Surgery, School of Clinical Medicine, Li Ka Shing Faculty of Medicine, The University of Hong Kong, Hong Kong, China</p>
1500 – 1530	Break
1530 – 1700	<p><b>Masterclass 10 – Breast Cancer Management in the Modern Era</b> <span style="float: right;"><b>M10</b></span></p> <p><b>Chairperson: Dr LAU Chi-hung</b>, Chief of Service (Surgery), Queen Elizabeth Hospital, Hong Kong, China</p> <p><b>M10.1 The Modern Multidisciplinary Breast Center: From Co-location to True Integration</b>  <b>Dr Serena WONG Yu-yan</b>, Consultant, Department of Surgery, Queen Elizabeth Hospital, Hong Kong, China</p> <p><b>M10.2 Multidisciplinary Management of Breast Cancer: A Radiologist's Role</b>  <b>Dr CHU Ka-man</b>, Consultant, Department of Diagnostic and Interventional Radiology, Queen Elizabeth Hospital, Hong Kong, China</p> <p><b>M10.3 Advances in Breast Cancer Oncological Treatment</b>  <b>Dr Michelle SZETO</b>, Associate Consultant, Department of Clinical Oncology, Queen Elizabeth Hospital, Hong Kong, China</p>

0900 – 1030	<p data-bbox="311 185 981 219"><b>Parallel Session 3 – Innovation for Advanced Nursing Care II</b></p> <p data-bbox="1489 185 1538 219"><b>PS3</b></p> <p data-bbox="311 255 1513 315"><b>Chairperson: Prof Agnes TIWARI Fung-ye</b>, Chairman, Hospital Governing Committee, Tseung Kwan O Hospital, Hong Kong, China</p> <p data-bbox="311 338 1513 465"><b>PS3.1 Better Nursing Handover Communication: Interdisciplinary, Translational Research and Training</b> Prof Diana SLADE, Professor of Applied Linguistics and Director of the Anu institute for Communication in Health Care, College of Arts and Social Sciences, School of Literature, Languages and Linguistics, Australian National University, Australia</p> <p data-bbox="311 488 1441 548"><b>PS3.2 3D Pre-operative Gamified Animation Training for Post-operative Pain Management</b> Dr WONG Man-chun, Nurse Consultant, Nursing Services Division, United Christian Hospital, Hong Kong, China</p> <p data-bbox="311 571 1481 665"><b>PS3.3 Validation of Capnography as a Bedside Method for Nasogastric Tube Placement Confirmation</b> Ms Savina SZE Yee-man, Nurse Consultant (Gerontology), Department of Medicine and Geriatrics, Sha Tin Hospital, Hong Kong, China</p> <p data-bbox="311 687 1538 748"><b>PS3.4 A Randomised Control Trial to Develop and Evaluate an Infection Control Simulation Training for Nursing Students</b> Mr CHAN Hiu-yeung, Advanced Practice Nurse, Central Nursing Department, Tung Wah Hospital, Hong Kong, China</p>
1030 – 1050	Break
1050 – 1220	<p data-bbox="311 851 986 884"><b>Parallel Session 5 – Innovation for Advanced Nursing Care III</b></p> <p data-bbox="1489 851 1538 884"><b>PS5</b></p> <p data-bbox="311 920 1337 954"><b>Chairperson: Dr Danny TONG</b>, Chief Manager (Nursing), Head Office, Hospital Authority, Hong Kong, China</p> <p data-bbox="311 976 1525 1070"><b>PS5.1 A Pilot Community Cardiopulmonary Resuscitation Programme in Rural Area of Hong Kong</b> Ms Cathy LEUNG Shuet-man, Department Operations Manager, Department of Accident and Emergency, North District Hospital, Hong Kong, China</p> <p data-bbox="311 1093 1533 1184"><b>PS5.2 A Pilot Study of an Interprofessional Mindfulness Group for Overactive Bladder in Women</b> Mr Gilbert LUI Ka-lok, Nurse Consultant, Department of Surgery, Pamela Youde Nethersole Eastern Hospital, Hong Kong, China</p> <p data-bbox="311 1207 1517 1299"><b>PS5.3 Innovating Palliative Care Nurse-Led Pilot for Young Oncology Patients Using ESG (Environment, Social and Governance) Perspectives</b> Mr TSANG Kwok-wai, Nurse Consultant, Department of Palliative Medicine Unit, Grantham Hospital, Hong Kong, China</p>
1220 – 1330	Break

1330 – 1500	<p><b>Parallel Session 7 – Leveraging Smart Technology to Achieve Clinical Excellence in Allied Health Services PS7</b></p> <p><b>Chairperson: Ms Priscilla POON</b>, Chief Manager (Allied Health), Head Office, Hospital Authority, Hong Kong, China</p> <p><b>PS7.1 How Information Technology Advancement Contributes in Hospital Authority’s Physiotherapy Service?</b>  <b>Mr Sung WAN</b>, Deputy Clinical Stream Coordinator (Allied Health), New Territories West Cluster; Senior Physiotherapist, Department of Physiotherapy, Tuen Mun Hospital, Hong Kong, China</p> <p><b>PS7.2 Enhancing Quality and Safety: Artificial Intelligence-assisted Training for New Recruits</b>  <b>Mr Matthew KWOK</b>, Senior Occupational Therapist, Department of Occupational Therapy, Pok Oi Hospital, Hong Kong, China</p> <p><b>PS7.3 Designing Intelligent Systems for Cognitive Support in Later Life: Robotics, Artificial Intelligence, and Real World Implementation</b>  <b>Dr Alex MIHAILIDIS</b>, Associate Vice President, International Partnerships; Professor, Institute of Biomedical Engineering, University of Toronto, Canada</p>
1500 – 1530	Break
1530 – 1700	<p><b>Parallel Session 8 – Transforming Allied Health Practices: Exploring New Technologies for Enhanced Patient Care PS8</b></p> <p><b>Chairperson: Dr Christy LAM</b>, Chief Manager (Strategy and Service Planning), Hospital Authority, Hong Kong, China</p> <p><b>PS8.1 Advanced Technology in Hospital Authority’s Prosthetic Service</b>  <b>Ms WANG Yi</b>, Advanced Practice Prosthetist and Orthotist, Department of Prosthetic and Orthotic, Kowloon Hospital, Hong Kong, China</p> <p><b>PS8.2 Evaluation of the Efficacy of Telehealth in Dietetic Management of Diabetes Mellitus: Pilot Study</b>  <b>Mr Ivan HO Chak-hang</b>, Dietitian, Department of Dietetics, Queen Mary Hospital, Hong Kong, China</p> <p><b>PS8.3 Evaluation of the First Advanced Practice Radiation Therapist Role in Hong Kong: Specialist in Urological Cancer</b>  <b>Mr HUNG Hing-ming</b>, Senior Radiation Therapist, Department of Clinical Oncology, Pamela Youde Nethersole Eastern Hospital, Hong Kong, China</p>

0900 – 1030	<p><b>Masterclass 5 – Update on Management of Bone Metastases</b> <span style="float: right;"><b>M5</b></span></p> <p><b>Chairperson: Dr Raymond WONG</b>, Deputy Hospital Chief Executive and Chief of Service (Orthopaedics and Traumatology), United Christian Hospital, Hong Kong, China</p> <p><b>M5.1 Integrate Systemic Therapies and Radiation Therapy – Curative and Palliative</b>  <b>Dr Sung Ina SOONG</b>, Deputy Hospital Chief Executive, Pamela Youde Nethersole Eastern Hospital; Chief of Service and Consultant, Department of Clinical Oncology, Pamela Youde Nethersole Eastern Hospital, Hong Kong, China</p> <p><b>M5.2 Role of Modern Imaging Techniques for Diagnosis, Staging and Response Assessment</b>  <b>Dr Jacky LAU</b>, Consultant, Department of Radiology, Pamela Youde Nethersole Eastern Hospital, Hong Kong, China  <b>Dr CHU Chi-yeung</b>, Service Director (Radiology), Department of Radiology; Chief of Service (Radiology), Department of Radiology, Pamela Youde Nethersole Eastern Hospital, Hong Kong, China</p> <p><b>M5.3 Surgical Intervention for Spinal Metastasis: A Personalised Multidisciplinary Approach to When and How?</b>  <b>Dr Paul Aarne KOLJONEN</b>, Deputy Hospital Chief Executive, Queen Mary Hospital; Consultant, Department of Orthopaedics and Traumatology, Queen Mary Hospital, Hong Kong, China</p> <p><b>M5.4 Pelvis Metastasis: Death Zone?</b>  <b>Dr Raymond YAU C H</b>, Consultant, Department of Orthopaedics and Traumatology, Queen Mary Hospital, Hong Kong, China</p> <p><b>M5.5 Pain Management for Metastatic Bone Pain</b>  <b>Dr CHAN Chi-wing</b>, Consultant, Department of Anaesthesia, Pain and Perioperative Medicine, Queen Mary Hospital, Hong Kong, China</p>
1030 – 1050	<b>Break</b>
1050 – 1220	<p><b>Masterclass 7 – Transforming Orthopaedic Outcomes with Technology and Teamwork</b> <span style="float: right;"><b>M7</b></span></p> <p><b>Chairperson: Dr CHOW Kai-ming</b>, Chief of Service (Medicine), Prince of Wales Hospital, Hong Kong, China</p> <p><b>M7.1 Long-term Use of Tenofovir Disoproxil Fumarate Increases Fracture Risk in Elderly Patients with Chronic Hepatitis B</b>  <b>Dr LAI Che-to</b>, Clinical Assistant Professor, Department of Medicine and Therapeutics, The Chinese University of Hong Kong, Hong Kong, China</p> <p><b>M7.2 Making Use of Your Natural Partner to Assess for Instability in Ankle Fractures</b>  <b>Dr YIP Wai-ying</b>, Associate Consultant, Department of Imaging and Interventional Radiology, Prince of Wales Hospital, Hong Kong, China</p> <p><b>M7.3 First Allied Health Clinic under Integrated Model of Specialist Outpatient Services of Orthopaedics and Traumatology – SAFE Programme</b>  <b>Ms Chloe LEUNG Sze-man</b>, Senior Physiotherapist, Department of Physiotherapy, Prince of Wales Hospital, Hong Kong, China</p>
1220 – 1330	<b>Break</b>

1330 – 1500	<p><b>Masterclass 9 – Diagnosis of Paediatric Diseases in the Genomic Era – A Pathologists’ Perspective</b> <span style="float: right;"><b>M9</b></span></p> <p><b>Chairperson: Dr LEE Tsz-leung</b>, Hospital Chief Executive, Hong Kong Children’s Hospital, Hong Kong, China</p> <p><b>M9.1 A Pathologist-led Laboratory Genetic Diagnostic Service – What and Why</b> Dr Jason SO, Chief of Service, Department of Pathology, Hong Kong Children’s Hospital, Hong Kong, China</p> <p><b>M9.2 Genetic and Genomic Pathology Service at Hong Kong Children’s Hospital</b> Dr Liz YUEN Yuet-ping, Consultant, Department of Pathology, Hong Kong Children’s Hospital, Hong Kong, China</p> <p><b>M9.3 Navigating Neonatal Challenges: A Case Illustration on Acute Neonatal Encephalopathy</b> Dr Chloe MAK Miu, Consultant, Division of Chemical Pathology, Department of Pathology, Hong Kong Children’s Hospital, Hong Kong, China Dr FU Yu-ming, Consultant, Department of Paediatrics and Adolescent Medicine, Princess Margaret Hospital, Hong Kong, China</p> <p><b>M9.4 The Vital Partnership Between Clinical Care and Genetic Pathology – The Case of Solid Tumours</b> Dr Amanda KAN, Consultant, Division of Anatomical Pathology, Department of Pathology, Hong Kong Children’s Hospital, Hong Kong, China Dr Dennis KU, Consultant, Department of Paediatrics and Adolescent Medicine, Hong Kong Children’s Hospital, Hong Kong, China</p>
1500 – 1530	<p><b>Break</b></p>
1530 – 1700	<p><b>Parallel Session 9 – Innovation in Practice</b> <span style="float: right;"><b>PS9</b></span></p> <p><b>Chairperson: Dr Calvin MAK Hoi-kwan</b>, Chairman, Kowloon Central Cluster Innovation Committee; Deputy Chief of Service and Consultant (Neurosurgery), Queen Elizabeth Hospital, Hong Kong, China</p> <p><b>PS9.1 Nurturing an Innovation Ecosystem in our Public Healthcare System</b> Dr Calvin MAK Hoi-kwan, Chairman, Kowloon Central Cluster Innovation Committee; Deputy Chief of Service and Consultant (Neurosurgery), Queen Elizabeth Hospital, Hong Kong, China Ms Candice LAI Ka-ling, Manager, Kowloon Central Cluster Clinical Research Support Office, Queen Elizabeth Hospital, Kowloon Central Cluster, Hong Kong, China</p> <p><b>PS9.2 SmartCare: Smarter Education, Documentation, and Better Patient Care</b> Dr Justin CHENG, Chief Executive Officer, SmartCare Technology Co. Limited, Hong Kong, China</p> <p><b>PS9.3 Peritoneal Dialysis Patient Empowerment by Ultrabag Connecting Device</b> Dr Sunny WONG, Chief of Service, Department of Medicine and Geriatrics, United Christian Hospital, Hong Kong, China Mr Andy CHAN, Advanced Practice Occupational Therapist, Department of Occupational Therapy, United Christian Hospital, Hong Kong, China</p> <p><b>PS9.4 Proof of Concept 1 – Transforming Innovation into Better Patient Outcome – Innovative Simulation Training in Trauma</b> Dr Irene LO, Consultant, Department of Surgery, Queen Elizabeth Hospital, Hong Kong, China</p> <p><b>PS9.5 Proof of Concept 2 – From Innovation to Better Patient Experience and Clinic Operations Optimisation</b> Dr LI Yim-chu, Deputy Hospital Chief Executive (Corporate Affairs); Consultant, Department of Family Medicine and Primary Healthcare, Queen Elizabeth Hospital, Hong Kong, China Mr Wallace CHENG, Senior Systems Manager, Information Technology Department, Kowloon Central Cluster, Hong Kong, China</p>

0900 – 1030	<p><b>^# Plenary VIII – Innovations and Advances in Surgery</b> <span style="float: right;"><b>P8</b></span></p> <p><b>Chairperson: Prof Stephen CHENG Wing-keung</b>, Chief of Division of Vascular Surgery, Department of Surgery, School of Clinical Medicine, The University of Hong Kong, Hong Kong, China</p> <p><b>P8.1 Surgical Advances in Management of Liver Cancer</b>  <b>Prof Albert CHAN Chi-yan</b>, Li Shu Fan Medical Foundation Professor in Surgery; Director of Liver Transplant Centre, Department of Surgery, School of Clinical Medicine, The University of Hong Kong, Hong Kong, China</p> <p><b>P8.2 Re-defining the Indications for Aortic Surgery in Women</b>  <b>Prof Colin BICKNELL</b>, Professor of Vascular Surgery, Department of Surgery and Cancer, Imperial College London, The United Kingdom</p> <p><b>P8.3 Advances in Robotic Microsurgery: Applications, Innovations and Future Directions</b>  <b>Dr Velda CHOW Ling-yu</b>, Honorary Consultant, Department of Surgery, Queen Mary Hospital, Hong Kong, China</p> <p><b>P8.4 Robotic Surgery in Urology: From Technology to Clinical Practice</b>  <b>Dr Simon WONG Hoi-lung</b>, Associate Consultant, Department of Surgery, Queen Mary Hospital, Hong Kong, China</p>
1030 – 1050	Break
1050 – 1220	<p><b>^# Plenary IX – Improving Surgical Outcomes through Global Collaborative Research</b> <span style="float: right;"><b>P9</b></span></p> <p><b>Chairperson: Dr Simon TANG Yiu-hang</b>, Cluster Chief Executive, New Territories East Cluster, Hong Kong, China</p> <p><b>P9.1 Improving Surgical Outcomes through Global Collaborative Research: Challenges and Opportunities</b>  <b>Prof Dion MORTON</b>, Professor of Surgery, Department of Surgery, University of Birmingham, The United Kingdom</p> <p><b>P9.2 Turning Data into Safer Surgery: From Audit to Intelligence in Surgical Outcome Monitoring</b>  <b>Prof Paul LAI Bo-san</b>, Emeritus Professor, Department of Surgery, The Chinese University of Hong Kong, Hong Kong, China</p> <p><b>P9.3 How We Translate Robotic Surgical Technologies from Bench to Bedside in Hong Kong</b>  <b>Prof Simon NG</b>, Chairman and Wei Lun Professor of Surgery, Department of Surgery, The Chinese University of Hong Kong, Hong Kong, China</p>
1220 – 1330	Break

^ Simultaneous interpretation (English/Putonghua) is available at this venue # Sessions will be available online

1330 – 1500	<p><b>^# Plenary X – Medical Equity: Organ Transplant</b> <span style="float: right;"><b>P10</b></span></p> <p><b>Chairperson: Dr Theresa LI</b>, Cluster Chief Executive, Hong Kong Island Cluster, Hong Kong, China</p> <p><b>P10.1 Organ Donation Conundrums in Asia and their Solutions</b>  <b>Prof Jeremy CHAPMAN</b>, Emeritus Consultant, Renal Unit, Westmead Hospital, Sydney, New South Wales Australia, Australia</p> <p><b>P10.2 Improving Transplant Equity through ABO Histocompatibility</b>  <b>Prof Lori Jeanne WEST</b>, Professor, Departments of Pediatrics, Surgery, Immunology and Laboratory Medicine, University of Alberta, Canada</p>
1500 – 1530	Break
1530 – 1630	<p style="text-align: center;"><b>Presentation of Awards</b></p> <p style="text-align: center;">Hospital Authority Outstanding Staff and Teams Award Presentation Ceremony 2026</p>
1630 – 1700	Photo taking (Convention Hall, Rooms 221 & 421)

^ Simultaneous interpretation (English/Putonghua) is available at this venue # Sessions will be available online

0900 – 1030	<p><b>^# Symposium 17 – New Drug and New Treatment Strategy from Chinese Medicine or Herbal Medicine for Unmet Medical Needs</b> <span style="float: right;"><b>S17</b></span></p> <p><b>Chairperson: Dr CHIANG Chun-yuan</b>, Vice-Chair, Center for China and Globalization Hong Kong Council; Advisory Committee Member, School of Chinese Medicine, The University of Hong Kong, Hong Kong, China</p> <p><b>S17.1 WE (Western + Eastern) Medicine as the Foundation of Future Medicines: YIV-906 Case Study – a Modernised 1800-year-old Formula to Improve Cancer Treatment Outcomes</b> Dr CHENG Yung-chi, Henry Bronson Professor of Pharmacology and Medicine, Pharmacology, Yale University, The United States of America</p> <p><b>S17.2 Chinese Medicine in Cancer Management: From Empiric to Evidence-based Medicine</b> Prof FENG Yibin, Director and Professor, Centre of Integrative Medicine, School of Chinese Medicine, Li Ka Shing Faculty of Medicine, The University of Hong Kong, Hong Kong, China</p>
1030 – 1050	Break
1050 – 1220	<p><b>^# Symposium 21 – Is Managing Cardiovascular-Kidney-Metabolic Syndrome Transformative for Reducing Diabetes Complications?</b> <span style="float: right;"><b>S21</b></span></p> <p><b>Chairperson: Dr Alexander LAW Chun-bon</b>, Cluster Chief Executive, Kowloon West Cluster, Hong Kong, China</p> <p><b>S21.1 Origins and Treatments for the Cardiovascular-Kidney-Metabolic Syndrome</b> Prof Carol POLLOCK, Professor of Medicine, University of Sydney, Australia</p> <p><b>S21.2 Managing Cardiovascular-Kidney-Metabolic Syndrome: Are We Ready Yet?</b> Prof LEE Chi-ho, Clinical Associate Professor, Department of Medicine, The University of Hong Kong, Hong Kong, China</p>
1220 – 1330	Break

^ Simultaneous interpretation (English/Putonghua) is available at this venue # Sessions will be available online

1330 – 1500	<p><b>^# Symposium 24 – Fostering Wellness and Fulfilment at Work</b> <span style="float: right;"><b>S24</b></span></p> <p><b>Chairperson: Ms Priscilla CHAU Pui-ying</b>, Board Member, Hospital Authority, Hong Kong, China</p> <p><b>S24.1 Harnessing Positive Psychology for Enhanced Happiness and Success</b>  <b>Dr Gilbert WONG</b>, Chief Executive Officer, Hypnohealth Consulting Limited; Founding Chairman, The Hong Kong Mental Wellness Association, Hong Kong, China</p> <p><b>S24.2 Building Resilience and Leveraging Personal Strengths: Lessons from Healthcare, Ice Climbing, and Mountains</b>  <b>Miss Janet KUNG</b>, Hong Kong Ice Climbing Athlete; Registered Nurse, Hong Kong, China</p> <p><b>S24.3 Financial Wellness: Empower Staff for a Secure Future</b>  <b>Mr Arnold CHOW</b>, General Manager, Personal Banking Product Department, Bank of China (Hong Kong) Limited, Hong Kong, China</p>
1500 – 1530	Break
1530 – 1630	<p style="text-align: center;"><b>Convention Hall</b></p> <p style="text-align: center;"><b>Presentation of Awards</b></p> <p style="text-align: center;">Hospital Authority Outstanding Staff and Teams Award Presentation Ceremony 2026</p>
1630 – 1700	Photo taking (Convention Hall, Rooms 221 & 421)

^ Simultaneous interpretation (English/Putonghua) is available at this venue # Sessions will be available online

0900 – 1030	<p><b>^# Symposium 18 – Advanced Technology to Improve Safety and Well-being in the Workplace</b> <span style="float: right;"><b>S18</b></span></p> <p><b>Chairperson: Mr David MAK</b>, Head of Human Resources, Head Office, Hospital Authority, Hong Kong, China</p> <p><b>S18.1 Advancements in Artificial Intelligence and Robotic Solutions for Occupational Health/Safety in Hospital and Elderly Care Environments</b>  <b>Mr Simon WONG Kwong-yeung</b>, Chief Executive Officer, Logistics and Supply Chain Multitech Research and Design Centre, Hong Kong, China</p> <p><b>S18.2 Embarking on a Journey to Explore Innovative Occupational Safety and Health Technologies in Osaka World Expo and Düsseldorf A+A Congress</b>  <b>Dr Winson YEUNG Koon-chuen</b>, Principal Consultant, Professional Services Division, Occupational Safety and Health Council, Hong Kong, China</p> <p><b>*S18.3 Advanced Exoskeleton Technology to Improve Safety and Well-being in the Workplace</b> 外骨骼機器助力職安健  <b>Mr Bob YU Yun-bo</b>, Chief Executive Officer, Shenzhen Kenqing Technology Co.,Ltd, China</p>
1030 – 1050	Break
1050 – 1220	<p><b>^# Symposium 22 – Sustainable Healthcare System</b> <span style="float: right;"><b>S22</b></span></p> <p><b>Chairperson: Ms Winnie CHIU Wing-kwan</b>, Board Member, Hospital Authority, Hong Kong, China</p> <p><b>S22.1 From Projects to Systems: Building Sustainable Healthcare That Delivers</b>  <b>Dr Brian O’CONNELL</b>, Senior Staff Specialist, Emergency Medicine, Coffs Harbour Emergency Department, MNCLHD; State Medical Lead, Net Zero Emergency Departments Hub, Climate Risk Net Zero Unit, Ministry of Health, New South Wales Health, Australia</p> <p><b>S22.2 Healthcare Sustainability from Both a Leadership and Ground-up Perspective</b>  <b>Dr Jeannie TEY Su-hui</b>, Group Sustainability Lead, Group Sustainability Office, NHG Health, Singapore</p> <p><b>S22.3 New Era of Medical Education</b>  <b>Prof CHUNG Pui-hong</b>, BAsc (Global Health and Development) Programme Director; Assistant Dean (Health Sciences Admissions) and Clinical Associate Professor of Practice, Division of Community Medicine and Public Health Practice, Li Ka Shing Faculty of Medicine, The University of Hong Kong, Hong Kong, China</p>
1220 – 1330	Break

^ Simultaneous interpretation (English/Putonghua) is available at this venue \* Presentation in Putonghua # Sessions will be available online

1330 – 1500	<p><b>^# Symposium 25 – Smart Operating Theatre from Anesthetist and Surgeon Perspectives</b> <span style="float: right;"><b>S25</b></span></p> <p><b>Chairperson: Dr Deacons YEUNG</b>, Cluster Chief Executive, New Territories West Cluster, Hong Kong, China</p> <p><b>S25.1 Smart Operating Theatre and Perioperative Journey – An Anaesthesiologist’s Perspective</b>  <b>Dr Albert CHAN Kam-ming</b>, Chief of Service, Department of Anaesthesia, Pain and Perioperative Medicine, Prince of Wales Hospital, Hong Kong, China</p> <p><b>S25.2 Smart Theatre from the Perspective of a Surgeon</b>  <b>Dr Danny CHAN</b>, Consultant, Department of Neurosurgery, Prince of Wales Hospital, Hong Kong, China</p> <p><b>S25.3 Smart Operating Theatre – from Engineer’s Perspective</b>  <b>Prof LIU Hongbin</b>, Professor and Director, Centre for AI and Robotics, Hong Kong Institute of Science and Innovation, Chinese Academy of Sciences, Hong Kong, China</p>
1500 – 1530	Break
1530 – 1630	<p style="text-align: center;"><b>Convention Hall</b></p> <p style="text-align: center;"><b>Presentation of Awards</b></p> <p style="text-align: center;">Hospital Authority Outstanding Staff and Teams Award Presentation Ceremony 2026</p>
1630 – 1700	Photo taking (Convention Hall, Rooms 221 & 421)

^ Simultaneous interpretation (English/Putonghua) is available at this venue # Sessions will be available online

0900 – 1030	# Service Enhancement Presentation 1
	<p><b>Chairpersons:</b> <b>Dr Maria LEUNG Kwan-wa</b>, Chief Manager (Primary and Community Services), Head Office, Hospital Authority, Hong Kong, China  <b>Prof WANG Ying-wei</b>, Director, Centre for Palliative Care, Hualien Tzuchi Hospital; Professor, Department of Medical Humanities, Tzuchi University, Taiwan, China</p> <p><b>SEP1 (F1) Better Manage Growing Demands I</b>  SEP1_F1.5 Bridging Clinical Recommendation and Financial Sustainability in Drug Formulary Management: The Cost Assessment Panel/ LI HYC et al.  SEP1_F1.6 Managing Increasing CTCA Demand: Novel Home-initiated 3-day Ivabradine Protocol Is Effective And Reduces Radiology Department Waiting Time Compared to Same-day Protocol/ YAP PM et al.  SEP1_F1.7 Efficacy of the TRIP Mobile App in Supporting Mental Well-being for Parents of Children with Autism Spectrum Disorder: A Waitlist-controlled Randomised Trial/ WONG OWH et al.</p> <p><b>SEP1 (F2) Better Manage Growing Demands II</b>  SEP1_F2.1 Nursing Qualification Record System in TKOH/ CHEUNG YP et al.  SEP1_F2.2 A Smart Sleep Apnea Self-management Support Programme (4S) to Improve Apnea Severity and Cardiovascular Health – A Pragmatic Randomised Controlled Trial with Mixed-method Evaluation/ LAI A et al.  SEP1_F2.7 Multi-night Sleep and CGM Uncover a Critical Link: Insomnia and COMISA Exacerbate Nocturnal Glycemic Variability in Well-controlled Type 2 Diabetes/ YOUNG HKB et al.</p>
1030 – 1050	Break
	# Service Enhancement Presentation 3
1050 – 1220	<p><b>Chairpersons:</b> <b>Dr Leo CHAN</b>, Chief Manager (Clinical Effectiveness and Technology Management), Head Office, Hospital Authority, Hong Kong, China  <b>Prof Eugene Fidelis SOH</b>, Deputy Group Chief Executive Officer, National Healthcare Group, Singapore</p> <p><b>SEP3 (F5) Clinical Safety and Quality Service II</b>  SEP3_F5.1 Workplace Violence Prevention in Occupational Therapy: A Multi-layered Framework for Staff Safety in Psychiatric Care/ JIM CH et al.  SEP3_F5.3 Effectiveness of Cardiac Rehabilitation Programme for Patients with Cardiovascular Diseases: A Comparison Between Normal and Impaired Left Ventricular Ejection Fraction/ LEE WWY et al.  SEP3_F5.5 Enhancement of Medication Safety through Collaboration with the Clinical Department for Simulation Training on High Alert Medication Administration/ NGAN WCA et al.</p> <p><b>SEP3 (F6) Clinical Safety and Quality Service III</b>  SEP3_F6.1 Fall Prevention in Hospitalised Elderly Patients Using Falls Risk Increasing Drugs (FRIDs) Assessment Tool through Multi-disciplinary Approach: A Quality Improvement Project/ CHEUNG YHT et al.  SEP3_F6.3 Individualised Music Intervention for Patients: Enhancing Well-being in Dementia Care/ HUI WC et al.  SEP3_F6.5 Animated Cartoon for Pain Relief in Paediatric Venipuncture: A Pilot Project/ LAU KY et al.</p>
1220 – 1330	Break

# Sessions will be available online

1330 – 1500	<p><b># Service Enhancement Presentation 5</b></p> <p><b>Chairpersons:</b> <b>Dr LAU Ka-hin</b>, Hospital Chief Executive, Ruttonjee and Tang Shiu Kin Hospitals, Tung Wah Eastern Hospital and Cheshire Home Chung Hom Kok, Hong Kong, China  <b>Prof Colin BICKNELL</b>, Professor of Vascular Surgery, Department of Surgery and Cancer, Faculty of Medicine, Imperial College London, The United Kingdom</p> <p><b>SEP5 (F9) Young Hospital Authority Investigators Presentations</b>  SEP5_F9.1 Preparing for the New Wave: A Decade of Patient Empowerment in Self-wound Dressing/ CHAN KK et al.  SEP5_F9.3 The Effectiveness of Group-based Cognitive Tele-rehabilitation in Cognitive Functions and Quality of Life of Elderly with Mild Cognitive Impairment Compared with Conventional Face-to-face Cognitive Rehabilitation: A Pilot Study/ CHIM TY et al.  SEP5_F9.7 A One-stop Hematuria Clinic Model to Enhance Diagnostic Timeliness, Service Efficiency and Patient Experience in Our Lady of Maryknoll Hospital/ MAK WHC et al.</p> <p><b>SEP5 Presentation of Best Poster Presentation Awards and Sharing Session I (F_P1-F_P3)</b>  SEP5_F_P1.32 Promote the Rational and Cost-effective Use of Proton Pump Inhibitors in Clinical Practice through Drug Utilisation Review/ TONG JCF et al.  SEP5_F_P2.20 Streamlining Hospital Admissions with a Semi-self-service Admission System (Interim Solution of Smart Admission Registration System)/ KWOK D et al.  SEP5_F_P3.26 Development of “Serious Game” Training Platform Utilising Design Thinking and Artificial Intelligence/ MAK CH et al.</p>
1550 – 1530	Break
1530 – 1630	<p style="text-align: center;"><b>Convention Hall</b></p> <p style="text-align: center;"><b>Presentation of Awards</b></p> <p style="text-align: center;">Hospital Authority Outstanding Staff and Teams Award Presentation Ceremony 2026</p>
1630 – 1700	Photo taking (Convention Hall, Rooms 221 & 421)

# Sessions will be available online

0900 – 1030	<b>Symposium 19 – Big Data and Advanced Technology</b>	<b>S19</b>
	<p><b>Chairperson: Dr Bonnie SIU Wei-man</b>, Hospital Chief Executive, Castle Peak Hospital and Siu Lam Hospital, Hong Kong, China</p> <p><b>S19.1 Brain and Big Data</b> Prof QIU Anqi, Director for Mental Health Research Center; Professor, Department of Health Technology and Informatics, The Hong Kong Polytechnic University, Hong Kong, China</p> <p><b>S19.2 Orchestrating Complexity: Building a Safety-driven Intraoperative Magnetic Resonance Imaging Service through Multidisciplinary Collaboration and Workflow Precision</b> Dr LAM Ka-man, Deputy Chief of Service, Department of Anaesthesia and Operating Theatre Services, Tuen Mun Hospital, Hong Kong, China</p> <p><b>S19.3 Pathology Foundation Models Transforming Precision Oncology and Patient Care</b> Prof CHEN Hao, Assistant Professor, Department of Computer Science and Engineering, The Hong Kong University of Science and Technology, Hong Kong, China</p>	
1030 – 1050	<b>Break</b>	
1050 – 1220	<b>Symposium 23 – Organ Transplant: A Step Forward in Promoting Organ Donation and Saving Lives</b>	<b>S23</b>
	<p><b>Chairperson: Dr Eric YAN Wai-ching</b>, Hospital Chief Executive, Kowloon Hospital and Hong Kong Eye Hospital, Hong Kong, China</p> <p><b>S23.1 Expanding the Donor Pool – Australia’s Approach</b> Ms Justine HOLLOWAY, Regional Nurse Manager, Donatelife Victoria, Australia</p> <p><b>S23.2a Increasing Organ Availability through Expanded Criteria: A Case Illustration Approach</b> Dr CHEUK Au, Consultant, Department of Medicine and Geriatric; Renal Team Head, Princess Margaret Hospital, Hong Kong, China</p> <p><b>S23.2b Increasing Organ Availability through Expanded Criteria: Surgical Innovations and Strategies</b> Dr CHU Tin-yu, Consultant, Department of Surgery, Princess Margaret Hospital, Hong Kong, China</p> <p><b>S23.3 Expanding the Local Donor Pool – Learning from Australia’s DonateLife Model</b> Dr Dominic SO, Kowloon West Cluster In-charge (Organ Donation); Consultant, Department of Intensive Care Unit, Princess Margaret Hospital, Hong Kong, China</p> <p><b>S23.4 Family Support in the Organ Donation Journey</b> Miss Mabel CHOW, Organ Donation Coordinator, Central Nursing Division, Princess Margaret Hospital, Hong Kong, China Ms CHEUNG Suk-man, Organ Donation Coordinator, Nursing Service Department, Tuen Mun Hospital, Hong Kong, China</p>	
1220 – 1330	<b>Break</b>	

1330 – 1500	<p><b>Masterclass 12 – Challenges and Recent Development in Clinical Toxicology</b> <span style="float: right;"><b>M12</b></span></p> <p><b>Chairperson: Dr Eddie YUEN Cheuk-pun</b>, Chief Manager (Infection, Emergency and Contingency), Hospital Authority, Hong Kong, China</p> <p><b>M12.1 Etomidate Abuse: the Anti-Drug Effort from Hospital Authority</b> Dr CHONG Yeow-kuan, Consultant Pathologist, Department of Pathology, Princess Margaret Hospital, Hong Kong, China</p> <p><b>M12.2 Clinical Management of Etomidate Abuse: Current Knowledge and Controversies</b> Dr CHAN Chi-keung, Consultant, Department of Clinical Toxicology, United Christian Hospital, Hong Kong, China</p> <p><b>M12.3 Integrated Chinese-Western Medicine Treatment Safety</b> Dr Raymond WONG Siu-ming, Consultant, Department of Medicine and Therapeutics, Prince of Wales Hospital, Hong Kong, China</p> <p><b>M12.4 Antidote Coordination in Crisis: Lessons from Poisoning Incident, Outbreak and Disaster</b> Mr YUNG Tsz-ho, Senior Pharmacist, Chief Pharmacist's Office, Head Office, Hospital Authority, Hong Kong, China</p>
1500 – 1530	Break
1530 – 1630	Convention Hall
	<p><b>Presentation of Awards</b></p> <p>Hospital Authority Outstanding Staff and Teams Award Presentation Ceremony 2026</p>
1630 – 1700	Photo taking (Convention Hall, Rooms 221 & 421)

0900 – 1030	<p><b>Symposium 20 – Supporting Patients in Community or Elderly and End-of-Life Care</b> <span style="float: right;"><b>S20</b></span></p> <p><b>Chairperson: Dr CHEUNG Wai-man</b>, Chief Manager (Patient Safety and Risk Management), Head Office, Hospital Authority, Hong Kong, China</p> <p><b>S20.1 Strengthening Post-discharge Care through Medical–social Collaboration: A Pilot Study of Family Caregiver Support in Hong Kong</b>  <b>Prof Vivian LOU Wei-qun</b>, Director, Sau Po Centre on Ageing; Professor, Department of Social Work and Social Administration, The University of Hong Kong, Hong Kong, China</p> <p><b>S20.2 Creating an Age-friendly City: Community Support for the End-of-Life</b>  <b>Prof Jean WOO</b>, Emeritus Professor of Medicine, Henry G Leong Professor of Gerontology and Geriatrics, Medicine and Therapeutics, The Chinese University of Hong Kong, Hong Kong, China</p> <p><b>S20.3 The Future of End-of-Life Care Policy in Hong Kong</b>  <b>Prof Roger CHUNG Yat-nork</b>, Associate Professor, The Jockey Club School of Public Health and Primary Care, The Chinese University of Hong Kong, Hong Kong, China</p>
1030 – 1050	Break
1050 – 1220	<p><b>Masterclass 11 – Cataract Surgery</b> <span style="float: right;"><b>M11</b></span></p> <p><b>Chairpersons: Prof Kenneth LI Kai-wang</b>, Chief of Service, Department of Ophthalmology, United Christian Hospital, Hong Kong, China  <b>Prof Hunter YUEN Kwok-lai</b>, Deputy Hospital Chief Executive and Consultant Ophthalmologist, Hong Kong Eye Hospital, Hong Kong, China</p> <p><b>M11.1 Epidemiology of Cataracts in Hong Kong</b>  <b>Dr Kendrick SHIH</b>, Clinical Associate Professor, Department of Ophthalmology, School of Clinical Medicine, The University of Hong Kong Li Ka Shing Faculty of Medicine, Hong Kong, China</p> <p><b>M11.2 Immediate Sequential Bilateral Cataract Surgery – Sustainability and Resistance</b>  <b>Prof Christopher LIU Swee-chau</b>, Lead Consultant (Ophthalmology Services), Department of Quality and Standards, Quality and Safety Division, Head Office, Hospital Authority, Hong Kong, China</p> <p><b>M11.3 High Flow Cataract Surgery – Hospital Authority’s Experience</b>  <b>Prof Kenneth LI Kai-wang</b>, Chief of Service and Consultant in Ophthalmology, Department of Ophthalmology, United Christian Hospital and Tseung Kwan O Hospital, Hong Kong, China</p> <p><b>M11.4 Optimising Cataract Services through Structured Peri-operative Nursing</b>  <b>Ms Monica LEE</b>, Nurse Consultant, Department of Ophthalmology, United Christian Hospital, Hong Kong, China  <b>Ms Jimmy YIP</b>, Nurse Consultant, Department of Ophthalmology, Hong Kong Eye Hospital, Hong Kong, China</p> <p><b>M11.5 Artificial Intelligence-enhanced Cataract Care: Improving Quality and Efficiency</b>  <b>Prof WU Xiaohang</b>, Associate Chief Physician, Zhongshan Ophthalmic Centre, Sun Yat-sen University, China</p> <p><b>M11.6 The Future – New T8 Territorial Cataract Centre</b>  <b>Prof Hunter YUEN Kwok-lai</b>, Deputy Hospital Chief Executive and Consultant Ophthalmologist, Hong Kong Eye Hospital, Hong Kong, China</p>
1220 – 1330	Break

1330 – 1500	<p><b>Special Session 12 – Enhancing Stroke Care through Evidence-based Integrated Chinese-Western Medicine: A Collaborative Model of Western and Chinese Medicine in Hong Kong</b> <span style="float: right;"><b>SS12</b></span></p> <p><b>Chairperson: Ms Rowena WONG</b>, Chief Manager (Chinese Medicine), Hospital Authority, Hong Kong, China</p> <p><b>SS12.1 The Efficacy of Integrated Chinese-Western Medicine Programme in Stroke Rehabilitation</b>  <b>Prof Thomas LEUNG Wai-hong</b>, Professor; Assistant Dean (Postgraduate Education),  The Chinese University of Hong Kong, Hong Kong, China</p> <p><b>▲SS12.2 The Advantages of Chinese Medicine in Integrated Chinese-Western Medicine Stroke Care</b>  中醫在中西醫協作治療中風的優勢  <b>Prof GUO Yuanqi</b>, Senior Chinese Medicine Consultant, Department of Chinese Medicine Service, Chinese Medicine Clinics cum Training and Research Centres, Pok Oi Hospital, Hong Kong, China</p>
1500 – 1530	Break
1530 – 1630	<p style="text-align: center;"><b>Convention Hall</b></p> <p style="text-align: center;"><b>Presentation of Awards</b>  Hospital Authority Outstanding Staff and Teams Award Presentation Ceremony 2026</p>
1630 – 1700	Photo taking (Convention Hall, Rooms 221 & 421)

▲ Presentation in Cantonese

0900 – 1030	<p><b># Service Enhancement Presentation 2</b></p> <p><b>Chairpersons:</b> <b>Mr Simon CHENG</b>, Chief Manager (Staff Development and Wellbeing), Department of Human Resources, Head Office, Hospital Authority, Hong Kong, China  <b>Dr KOH Lip-Hoe</b>, Senior Consultant, Department of Geriatric Medicine and Palliative Medicine, Changi General Hospital, Singhealth, Singapore</p> <p><b>SEP2 (F3) Staff Engagement and Empowerment</b>  SEP2_F3.1 Clinical Indicators in Monitoring Progress of Patient Blood Management/ KONG SY et al.  SEP2_F3.3 Apply Lewin's 3-Stage Change Theory to Implement Hospital Digitalised Pressure Injury Monitoring System for Enhanced Reporting Efficiency and Proactive Intervention/Prevention/ LEE TK et al.  SEP2_F3.6 Enhancing Physical Resilience through a Brief Towel Exercise: Impact on Staff Physical Readiness, Hazard Awareness, and Slip-trip-fall Incidence Reduction/ HO MLA et al.</p> <p><b>SEP2 (F4) Clinical Safety and Quality Service I</b>  SEP2_F4.1 Pilot Enhancement Programme on Speech Therapy Referral for Tongue Pressure Assessment Training for Patients with Sarcopenia in Geriatric Day Hospital of Ruttonjee and Tang Shiu Kin Hospitals/ CHAN TS et al.  SEP2_F4.4 Standardising Collection of Continuous Ambulatory Peritoneal Dialysis Fluid for Culture/ MOK WS et al.  SEP2_F4.6 Effect of an Evidence-based Assessment Tool to Minimise the Use of Physical Restraint in General Adult Ward Settings in Hong Kong: A Cluster Randomised Controlled Trial/ TSANG LF et al.</p>
1030 – 1050	Break
1050 – 1220	<p><b># Service Enhancement Presentation 4</b></p> <p><b>Chairpersons:</b> <b>Dr Frank CHAN Wan-kin</b>, Hospital Chief Executive, Hong Kong Buddhist Hospital, Our Lady of Maryknoll Hospital and TWGHs Wong Tai Sin Hospital, Hong Kong, China  <b>Prof NGIAM Kee-yuan</b>, Head, AI Office, National University Health System, Singapore</p> <p><b>SEP4 (F7) Healthcare Advances, Research and Innovations</b>  SEP4_F7.1 Evaluation of a Privacy-preserving Thermographic Artificial Intelligence System for Fall Prevention: A Prospective Clinical Implementation Study/ CHU ACH et al.  SEP4_F7.3 Examining the Feasibility and Effectiveness of Immersive Virtual Reality for People with Dementia in a Hospital Setting: A Single-arm Pre-post Pilot Study/ LAU WYS et al.  SEP4_F7.4 Artificial Intelligence-derived Spine Alignment Scanning for Evaluation of Schroth-based Three-dimensional Postural Correction in Adolescent Idiopathic Scoliosis/ LEUNG KHH et al.</p> <p><b>SEP4 (F8) Collaboration and Teamwork</b>  SEP4_F8.1 Striving towards Carbon Neutrality: Developing Low Carbon Hospitals in Kowloon West Cluster/ CHAN E et al.  SEP4_F8.6 Data-driven Changes: The Impact of Using the SOMIP Emergency Risk Calculator in the Department of Surgery, NTWC/ WONG KF et al.  SEP4_F8.7 E-enrolment: A Novel Electronic Enrolment System – Digital Transformation of a 30-year Population-wide Practice/ WONG WY et al.</p>
1220 – 1330	Break

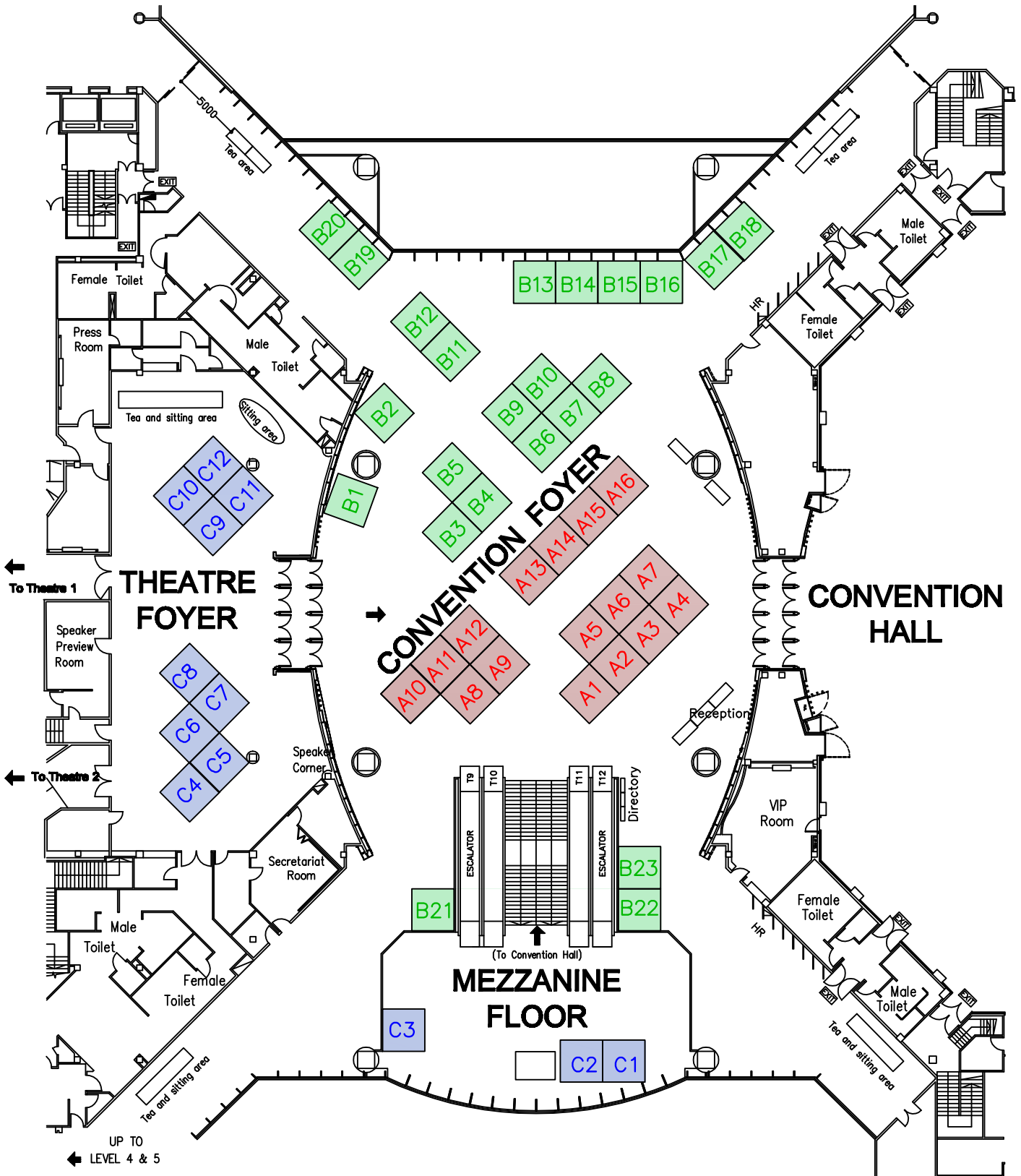
# Sessions will be available online

1330 – 1500	<p><b># Service Enhancement Presentation 6</b></p> <p><b>Chairperson: Dr CHENG Koi-man</b>, Hospital Chief Executive, Kwai Chung Hospital, Hong Kong, China</p> <p><b>SEP6 Presentation of Best Poster Presentation Awards and Sharing Session II (F_P4 to F_P9)</b></p> <p>SEP6_F_P4.7 Improving Energy Fulfillment in FYKH Medical and Geriatric Patients through a Pilot Calorie-dense Food Supplement Programme: A Mixed Methods Study/ CHEUNG KKS et al.</p> <p>SEP6_F_P5.42 Identifying Medication-associated Fall Risk in a Hong Kong Psychiatric Hospital: A 6-year Retrospective Study/ WONG SL et al.</p> <p>SEP6_F_P6.34 Antenatal Breastmilk Expression – Prepare the First Precious Gift for Baby/ SZE PY et al.</p> <p>SEP6_F_P7.36 The Development of Electronic Tender Submission System in KEC (Phase I) – A New Digital Approach in Hospital Authority's Procurement Process/ TONG WC et al.</p> <p>SEP6_F_P8.17 A Structured Sarcopenia Programme in Geriatric Ward to Improve Functional Outcomes and Reduce Post Discharge Falls/ IP WCT et al.</p> <p>SEP6_F_P9.16 Circuit Training Programme for People with Parkinson's Disease: Programme Review/ KWONG WY et al.</p>
1500 – 1530	Break
1530 – 1630	<p style="text-align: center;"><b>Convention Hall</b></p> <p style="text-align: center;"><b>Presentation of Awards</b></p> <p style="text-align: center;">Hospital Authority Outstanding Staff and Teams Award Presentation Ceremony 2026</p>
1630 – 1700	Photo taking (Convention Hall, Rooms 221 & 421)

# Sessions will be available online

# Floor Plan for Exhibitions – Convention Foyer

**Hong Kong Convention & Exhibition Centre**  
11–13 May 2026  
0900–1730



## Exhibitors – Convention Foyer

### Abbott Laboratories Limited

Contact: Ms Kelly HU, Brand Manager  
Tel: (886) 988571718  
Email: kelly.hu@abbott.com

### Alcatel-Lucent Enterprise

Contact: Ms Jocelyn TAN, Head of Marketing, APAC  
Tel: (65) 91822708  
Email: jocelyn.tan@al-enterprise.com

### A. R. Medicom Inc. (Asia) Limited

Contact: Ms Ling TSUI, Assistant Marketing Manager  
Tel: (852) 2179 7181 Fax: (852) 2147 4665  
Email: ling.tsui@medicom-asia.com

### Arjo Hong Kong Limited

Contact: Mr Kandy LOO, Managing Director  
Tel: (852) 2960 7600 Fax: (852) 2960 1711  
Email: kandy.loo@arjo.com

### Baxter Healthcare Ltd.

Contact: Mr Dino CHAN, Senior Product Manager  
Tel: (852) 6113 0955, (852) 3405 3000 Fax: (852) 2111 0188  
Email: dino\_chan@baxter.com

### Becton Dickinson Asia Limited

Contact: Miss Belinda KWOK, Sales and Marketing Manager  
Tel: (852) 2161 9230, (852) 2575 8668 Fax: (852) 2803 5320  
Email: belinda.kwok@bd.com

### China Mobile Hong Kong Company Limited

Contact: Mr Bin ZHANG, Sales Consultant  
Tel: (852) 9204 4035  
Email: benzhang@hk.chinamobile.com

### Cornerstone Robotics Limited

Contact: Miss Crystal LAM, Business Development Manager  
Tel: (852) 6541 1714  
Email: crystal.lam@csrbrtx.com

### Draeger Hong Kong Limited

Contact: Mr Benny SY, Regional Manager (Hong Kong)  
Tel: (852) 2877 3077 Fax: (852) 2877 3066  
Email: benny.sy@draeger.com

### Faculty of Health and Social Sciences, The Hong Kong Polytechnic University

Contact: Ms Kitman LAU, Community Engagement & Partnership Manager  
Tel: (852) 3400 3983, (852) 9483 0175  
Email: kitman.lau@polyu.edu.hk

### Fisher & Paykel Healthcare

Contact: Mr Yeshan EKANAYAKE, Business Manager  
Tel: (852) 2116 0032 Fax: (852) 2116 0085  
Email: yeshan.ekanayake@fphcare.com.hk

### Booth No.

#### A12 Fresenius Kabi Hong Kong Ltd.

Contact: Mr Brian LUK / Mr Eric FONG, Sales Supervisor  
Tel: (852) 6170 5256 / (852) 6133 1192 Fax: (852) 2119 0815  
Email: brian.luk@fresenius-kabi.com / eric.fong@fresenius-kabi.com

#### B12 G.tec Neurotechnology Hong Kong Ltd.

Contact: Miss Christy LI, Regional Sales Manager APAC  
Tel: (852) 9382 1530  
Email: li@gtec.at

#### B21 Gold Together Technology Limited

Contact: Mr Vincent NG, Director  
Tel: (852) 5405 6864 Fax: (852) 2120 3521  
Email: info@gt-technology.com.hk

#### B16 Healthy Medical Company Limited

Contact: Mr Chris FAN, Marketing Manager  
Tel: (852) 8338 3333, (852) 9734 7349  
Email: chris@hmed.com.hk

#### B10 HKT Enterprise Solutions

Contact: Mr Daniel CHEN, Vice President, Commercial Sales –  
Healthcare & Retail, Commercial Group, HKT  
Tel: (852) 2888 4228, (852) 9020 0032  
Email: Daniel.Y.Chen@pccw.com

#### A16 Hong Kong Applied Science and Technology Research Institute

Contact: Ms Jennifer LEUNG, Senior Manager  
Tel: (852) 3406 0276  
Email: jenniferklleung@astri.org

#### A13 HSBC Life (International) Limited

Contact: Ms Joanna WONG, Senior Manager,  
EB Business Development Distribution  
Tel: (852) 2974 2602  
Email: joanna.c.wong@hsbc.com.hk

#### A1 & A2 HSM Industrial Solution Company Limited

Contact: Mr Nelson LEE, Digital Marketing Executive  
Tel: (852) 9221 5872 Fax: (852) 2668 2701  
Email: marketing@hsm-is.com

#### A11 ICU Medical

Contact: Mr Henry CHEUNG, Sales & Marketing Director, HK  
Tel: (852) 5808 8630 Fax: (852) 5808 8609  
Email: henry.cheung@icumed.com

#### B3 & B4 Janley Limited

Contact: Mr Yeo TAI, Sales Manager  
Tel: (852) 2487 7077 Fax: (852) 2487 7090  
Email: sales@janley.com.hk

#### B20 Just Med Ltd.

Contact: Mr Terence YUNG, General Manager  
Tel: (852) 2742 4370, (852) 6376 0816 Fax: (852) 2786 1405  
Email: terenceyung@justmed.com.hk

### Booth No.

B17

B7

C6 & C7

C4

A3 & A4

B1

B13

B8

A7

B15

B19

(In alphabetical order)

## Exhibitors – Convention Foyer

	Booth No.		Booth No.
<p><b>KARL STORZ Endoscopy China Ltd.</b>            Contact: Ms Yanni LI, Marketing Executive            Tel: (852) 2865 2411 Fax: (852) 2865 4114            Email: inquiry@karlstorz.com.hk</p>	<b>C5</b>	<p><b>Solventum (KCI Hong Kong Holding Limited)</b>            Contact: Ms Erica LAI, Marketing Manager            Tel: (852) 3616 6056 Fax: (852) 2234 6044            Email: fhk5@solventum.com</p>	<b>C10</b>
<p><b>KLN Medical Limited</b>            Contact: Ms Cassty HO, Assistant Manager - Marketing            Tel: (852) 2765 1926 Fax: (852) 2764 5254            Email: HK.KLNMedical.info@KLN.com</p>	<b>C11 &amp; C12</b>	<p><b>Sonne Technology International Limited</b>            Contact: Ms Ada CHAN, Executive Assistant            Tel: (852) 2425 0926 Fax: (852) 2423 9092            Email: ada@sonne.com.hk</p>	<b>A5 &amp; A6</b>
<p><b>Lachesis Intelligent Healthcare (HK) Co., Limited</b>            Contact: Miss Xin WEN, Innovative Market Researcher            Tel: (86) 18665850411            Email: xin.wen@lachesis-mh.com</p>	<b>A10</b>	<p><b>Sonos Medical Limited</b>            Contact: Mr Gary HO, Sales Manager            Tel: (852) 2126 7095 Fax: (852) 3909 3816            Email: info@sonosmed.com.hk / gary@sonosmed.com.hk</p>	<b>A15</b>
<p><b>LKS Faculty of Medicine, The University of Hong Kong</b>            Contact: Ms Sandra LI, AAI            Tel: (852) 3910 2530            Email: san310@hku.hk</p>	<b>C8</b>	<p><b>Standard Chartered Bank (Hong Kong) Limited</b>            Contact: Mr Ivan NG, Executive Director and Head,            Mortgage &amp; Alliance, Corporate Partnerships            Tel: (852) 3843 1135            Email: Ivan.WL.Ng@sc.com</p>	<b>C2</b>
<p><b>Manulife (International) Limited</b>            Contact: Ms Candy HO, Head of Data &amp; Analytics            and Business Innovations            Tel: (852) 2202 1961            Email: candy_sc_ho@manulife.com</p>	<b>C3</b>	<p><b>TCM Healthcare (London) Ltd.</b>            Contact: Mr Timothy CHAN, Managing Director            Tel: (852) 2811 2766 Fax: (852) 2579 0233            Email: info@tcmlondon.com</p>	<b>B2</b>
<p><b>Million Tech Development Limited</b>            Contact: Ms Phoebe LAM, Marketing Manager            Tel: (852) 2784 2837 Fax: (852) 2319 2967            Email: phoebe.yy.lam@milliontech.com</p>	<b>A14</b>	<p><b>The Jockey Club School of Public Health and Primary Care, The Chinese University of Hong Kong</b>            Contact: Miss Xinqi SU, Assistant Communication Manager            Tel: (852) 2252 8429            Email: xinqisu@cuhk.edu.hk</p>	<b>C9</b>
<p><b>Molnlycke Health Care Hong Kong Ltd.</b>            Contact: Miss Fiona TAI, Marketing Manager            Tel: (852) 6012 6002 Fax: (852) 2638 2616            Email: fiona.tai@molnlycke.com</p>	<b>B9</b>	<p><b>The Government of the HKSAR Electrical and Mechanical Services Department</b>            Contact: EMSTF Maintenance Service Hotline            Tel: (852) 2333 3762            Email: info@emsd.gov.hk</p>	<b>C1</b>
<p><b>Prime Priority Technology Limited</b>            Contact: Ms Christine CHEUNG, Assistant to Director            Tel: (852) 3703 9602 Fax: (852) 3011 5084            Email: christine.cheung@primeprioritytech.com</p>	<b>B5</b>	<p><b>United Imaging Healthcare Hong Kong Limited</b>            Contact: Mr Brian LEE, Regional Sales Director            (Hong Kong and Macau)            Tel: (852) 6676 1368 Fax: (852) 3150 8096            Email: brian.lee@united-imaging.com</p>	<b>B6</b>
<p><b>Shenzhen Mindray Bio-Medical Electronics Co., Ltd.</b>            Contact: Mr Aaron XIE, Strategic Account Manager            Tel: (852) 9868 3725            Email: aaron.xie@mindray.com</p>	<b>B22 &amp; B23</b>	<p><b>Winner Medical (Hong Kong) Ltd.</b>            Contact: Ms Fanny TSUI, Product Manager            Tel: (852) 2363 8700 Fax: (852) 3170 7007            Email: fanny.tsui@winnermedical.com</p>	<b>B18</b>
<p><b>Shun On Healthcare Limited</b>            Contact: Ms Yani KWOK, Marketing Executive            Tel: (852) 3123 8087 Fax: (852) 2370 2414            Email: yaniyanikwok@gmail.com</p>	<b>B14</b>	<p><b>Xunfei Healthcare Technology Co., Ltd.</b>            Contact: Mr Stephen LYU, Brand Manager            Tel: (86) 15955120978            Email: jflu7@flemply.com</p>	<b>A8 &amp; A9</b>
<p><b>Simon Kwan &amp; Associates Ltd.</b>            Contact: Mr Edwin WONG, Managing Director            Tel: (852) 2882 2500 Fax: (852) 2882 4380            Email: office@simonkwan.com.hk</p>	<b>B11</b>		

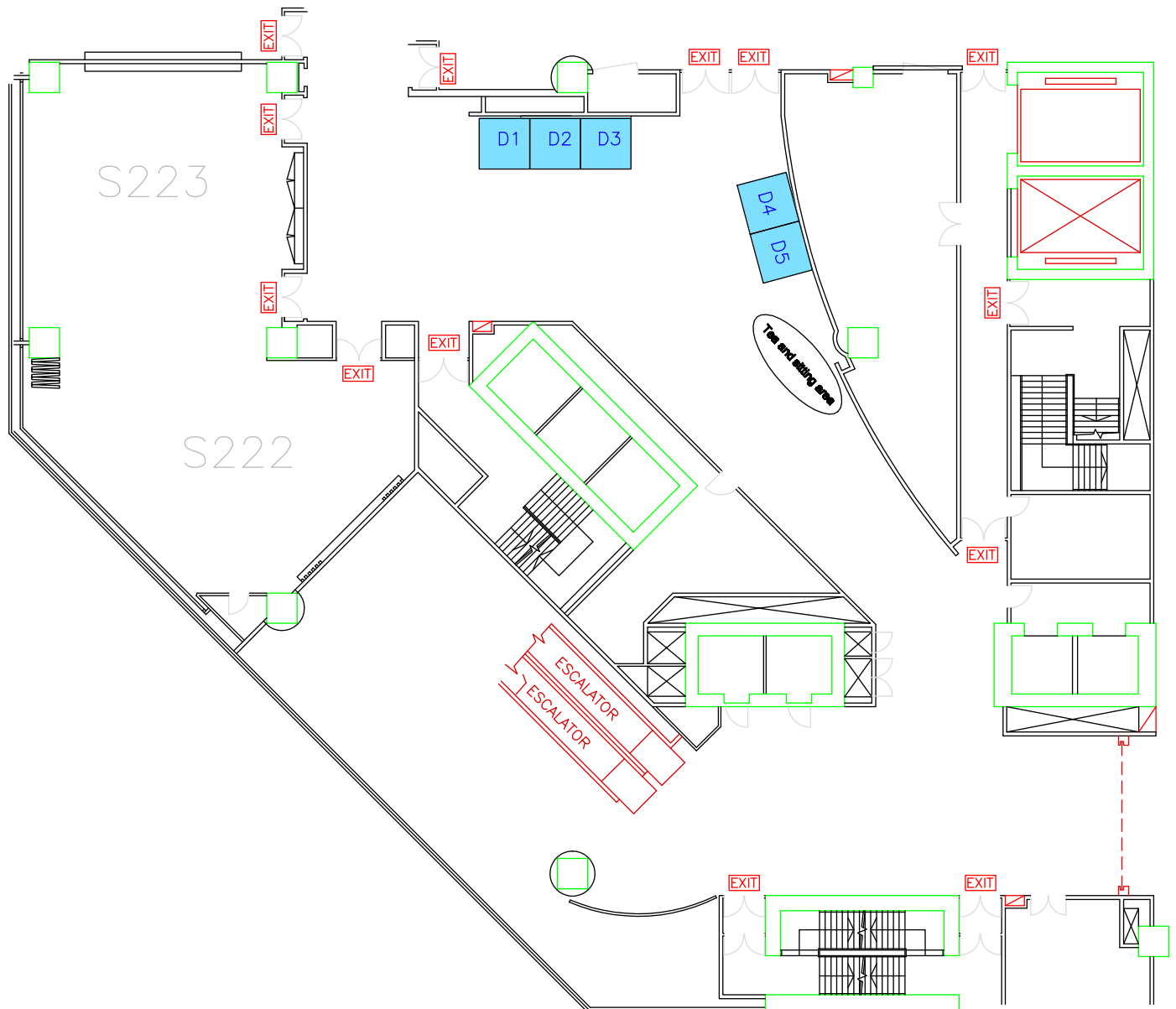
(In alphabetical order)

## Floor Plan for Exhibitions – Level 2

### Hong Kong Convention & Exhibition Centre

11–13 May 2026

0900–1730



## Exhibitors – Level 2

### Deltason Medical Limited

Contact: Mr Kel LEUNG, Sales Manager  
Tel: (852) 2416 8321 Fax: (852) 2437 9407  
Email: kel.leung@deltason.com

### Eisai (Hong Kong) Company Limited

Contact: Ms Rainbow YEUNG, Product Manager  
Tel: (852) 2516 6128 Fax: (852) 2561 5042  
Email: y-rainbow@eisaihk.com

### EVER Neuro Pharma (Asia) Limited

Contact: Mr Julian WONG, Senior Market Access Manager  
Tel: (852) 2565 6309 Fax: (852) 2558 8338  
Email: asia@everpharma.asia

### Booth No.

D5

### Intuitive Surgical-Fosun (HongKong) Co., Limited

Contact: Ms Irene TSANG, Administration Manager  
Tel: (852) 3844 6500 Fax: (852) 3619 4190  
Email: irene.tsang@intufosun.com

D1

### Pfizer Corporation Hong Kong Limited

Contact: Miss Scarlet LAU, Marketing Executive  
Tel: (852) 6898 3966  
Email: scarlet.lau@pfizer.com

D2

### Booth No.

D3

D4

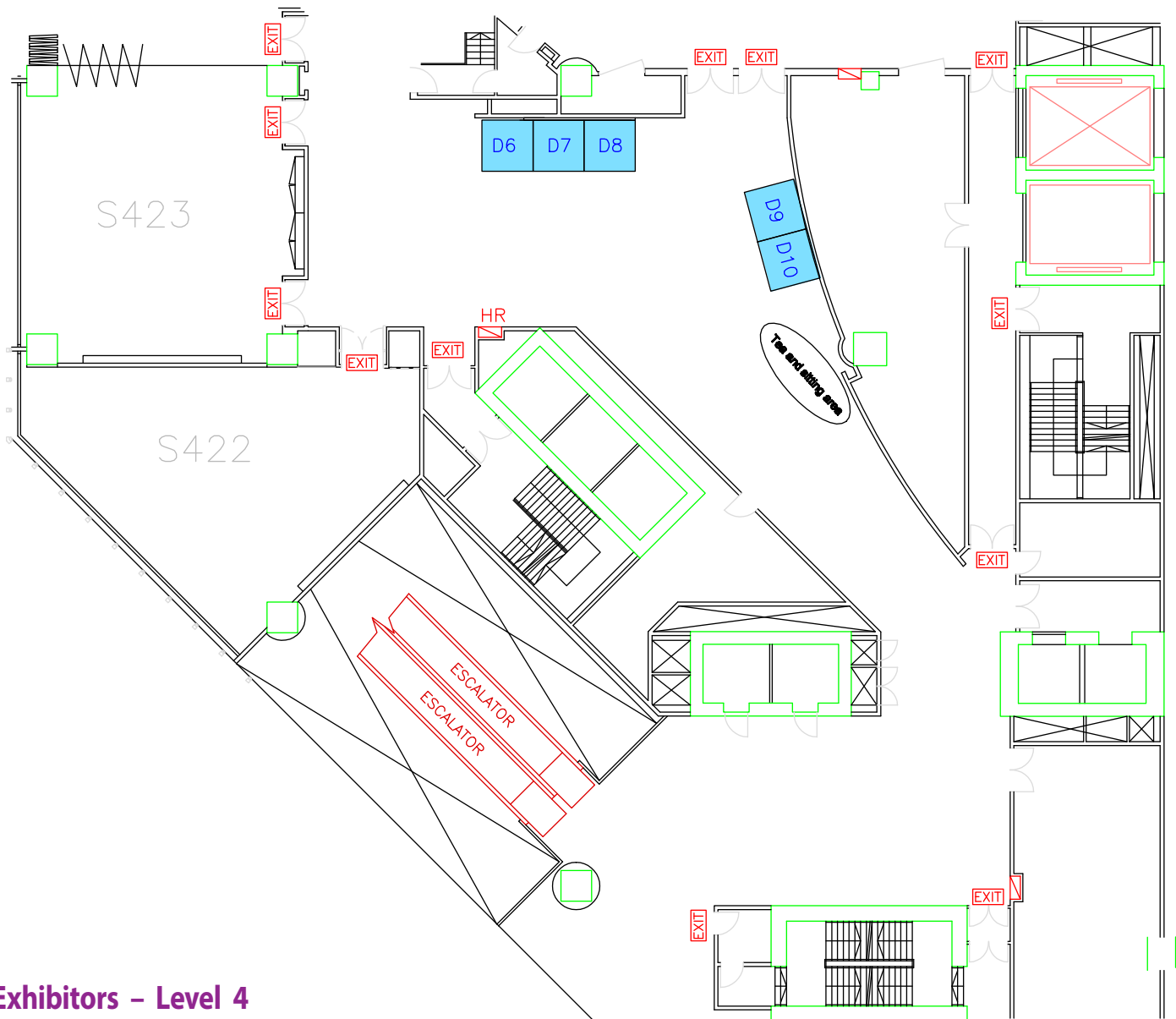
(In alphabetical order)

## Floor Plan for Exhibitions – Level 4

### Hong Kong Convention & Exhibition Centre

11–13 May 2026

0900–1730



## Exhibitors – Level 4

### Codex Genetics Limited

Contact: Ms Sherie LEE, Project Manager  
Tel: (852) 3008 2560 Fax: (852) 2381 8688  
Email: sherie.lee@codexgenetics.com

### GS1 Hong Kong

Contact: Ms Dora KIT, Senior Manager - Solution Marketing  
Tel: (852) 9221 2004  
Email: dorakit@gs1hk.org

### Guyline (Asia) Ltd.

Contact: Ms Wendy LAI, Manager  
Tel: (852) 2856 0606 Fax: (852) 2811 2947  
Email: gm@guyline.com.hk

### Booth No.

D8

### Heal Force Development Limited

Contact: Miss Joyce CHEUNG, Manager  
Tel: (852) 2835 7303 Fax: (852) 2897 5434  
Email: joycecheung@healforce.com.hk

D7

### Mobigator Technology Group

Contact: Miss Charlene LEE, Strategic & Business Development Manager  
Tel: (852) 5668 3298  
Email: enquiry@hk.mobigator.com

D6

### Booth No.

D10

D9

(In alphabetical order)

## Sponsors

Abbott Laboratories Limited  
ALE (Hong Kong) Limited  
Allied World Assurance Company, Ltd  
A. R. Medicom Inc. (Asia) Limited  
Arjo Hong Kong Limited  
Asia Pacific Catering Corp., Ltd.  
Automated Systems (H.K.) Limited  
Baxter Healthcare Ltd.  
Becton Dickinson Asia Limited  
Boehringer Ingelheim (Hong Kong) Ltd.  
Bright Future Pharmaceutical Lab. Ltd.  
Cheung Hing Construction Co. Ltd  
China Mobile Hong Kong Company Limited  
China State Construction Engineering (Hong Kong) Limited  
Chun Wo Construction & Engineering Company Limited  
Codex Genetics Limited  
Cornerstone Robotics Limited  
Deltason Medical Limited  
Draeger Hong Kong Limited  
Eisai (Hong Kong) Company Limited  
EVER Neuro Pharma (Asia) Limited  
Faculty of Health and Social Sciences, The Hong Kong Polytechnic University  
Fisher & Paykel Healthcare  
Fresenius Kabi Hong Kong Ltd.  
G.tec Neurotechnology Hong Kong Ltd.  
Gold Together Technology Limited  
GS1 Hong Kong  
Guyline (Asia) Ltd.  
Heal Force Development Limited  
Healthy Medical Company Limited  
HKT Enterprise Solutions  
Hong Kong Air Purifier Center Limited  
Hong Kong Applied Science and Technology Research Institute  
HSBC Life (International) Limited  
HSM Industrial Solution Company Limited  
ICU Medical  
Intuitive Surgical-Fosun (HongKong) Co., Limited  
Janley Limited  
Just Med Ltd.  
KARL STORZ Endoscopy China Ltd.  
KLN Medical Limited  
Lachesis Intelligent Healthcare (HK) Co., Limited  
LKS Faculty of Medicine, The University of Hong Kong  
Manulife (International) Limited  
MECO ENGINEERING LIMITED  
Million Tech Development Limited  
Mobigator Technology Group  
Molnlycke Health Care Hong Kong Ltd.  
Novartis Pharmaceuticals (HK) Limited  
Pfizer Corporation Hong Kong Limited  
Prime Priority Technology Limited  
Profit Royal Pharmaceutical Limited  
Shenzhen Mindray Bio-Medical Electronics Co., Ltd.  
Shun On Healthcare Limited  
Siemens Healthcare Limited  
Simon Kwan & Associates Ltd.  
Solventum (KCI Hong Kong Holding Limited)  
Sonne Technology International Limited  
Sonos Medical Limited  
Standard Chartered Bank (Hong Kong) Limited  
TCM Healthcare (London) Ltd.  
The Government of the HKSAR Electrical and Mechanical Services Department  
The Jockey Club School of Public Health and Primary Care, The Chinese University of Hong Kong  
United Imaging Healthcare Hong Kong Limited  
Winner Medical (Hong Kong) Ltd.  
WONG & OUYANG (HK) LTD  
Xunfei Healthcare Technology Co., Ltd.

*(In alphabetical order)*