

# Leveraging Youth Involvement and A.I. Technology on Dementia Care: A Forward-thinking Approach

**Presenters:** Mr Kenji KAM & Dr Michael LAU

## Team Members :

KAM KW(1); ZHANG SW(1); CHEUNG MY(1); LAU CC(2); YIP KW(3)

(1) Patient Resources Centre, Tuen Mun Hospital

(2) Department of Medicine & Geriatrics, Tuen Mun Hospital

(3) Jockey Club Kin Sang Youth S.P.O.T., HKFYG

New Territories West Cluster

Hospital Authority

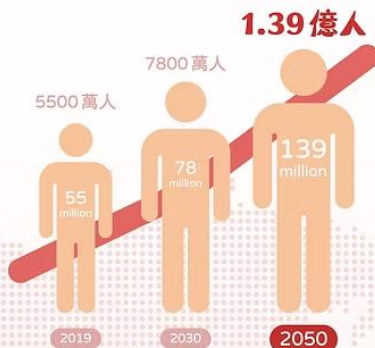


# Dementia Crisis

## 認知障礙症在全球的情況 Dementia across the world

目前估計全世界有超過 5500 萬人患有認知障礙症。到 **2050 年**，受影響的人數將上升至 **1.39 億**。

There are currently estimated to be over 55 million people worldwide living with dementia. The number of people affected is set to rise to 139 million by 2050.

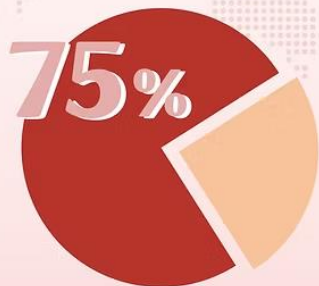


全球 **每 3 秒鐘** 就有 1 人確診認知障礙症。

A new case of dementia arises somewhere in the world every 3 seconds.

全球多達 **四分之三** 的認知障礙症患者 **尚未** 得到診斷。

Up to three quarters of those living with dementia worldwide have not received a diagnosis.



## 認知障礙症在香港的情況 Dementia in Hong Kong

**70 歲或以上長者**  
**每 10 名, 1 人患病**



1 in every 10 local seniors aged 70 or above are living with dementia

**85 歲以上長者患病率**  
**高達三分之一**



1 in every 3 local seniors aged 85 or above are living with dementia

2025年-2045年香港認知障礙症人士人口推算  
Hong Kong Population Projections of people living with dementia (2025-2046)



隨人口老化，患病人數將急劇增加，按目前人口估計，到 **2045 年**，受影響人數將上升至 **39 萬人**，可能每個家庭也有 1 位患者！

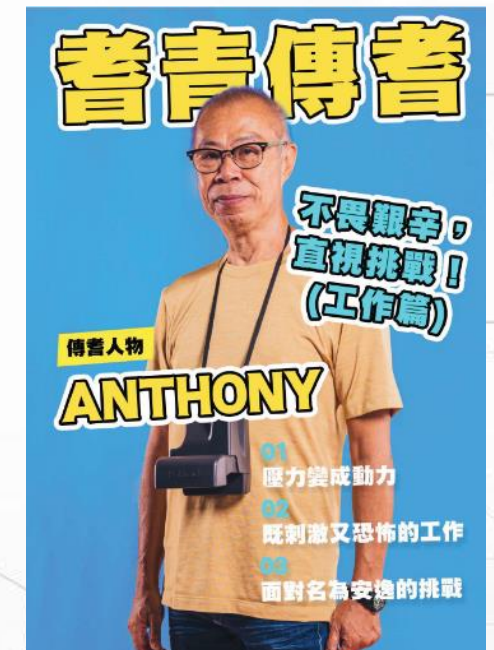
As population ages, the prevalence of dementia will sharply increase. The number of local people affected is estimated to rise to 390 thousand by 2045. Each family may have a person living with dementia!

Key challenges: Significant increase in healthcare costs + emotional toll



# Objectives

- To develop youth volunteers' network in assisting activities with reminiscence therapy elements and A.I. for PWD
- To improve the cognitive, emotional and overall well-being of PWD
- To raise public awareness on dementia care through community exhibitions



# Development Process

1. TMH to recruit PWD and their Caregivers



2. Training to volunteers



3. Interviews and stories created



4. Production



5. Exhibitions



# Key Features



- Youth volunteers conduct life-story interviews and visit favorite places of PWD

**Feature 1**  
Intergenerational  
Reminiscence  
Therapy

**Feature 2**  
A.I. Technology  
Storytelling



- 360° camera
- A.I. Photo



**Feature 4**  
Medical Social  
Collaboration

- To enhance the community support network for PWD and their caregivers

**Feature 3**  
Public Exhibitions



- To raise public awareness and community empathy

# Roles & Collaboration

## TMH

- M&G Dept: Clinical oversight + PWD recruitment + Training
- PRC: Bridging & service matching

## Youth Centre

- Volunteers: 80 youth trained in 360° cameras & Photoshop A.I.
- Support: Outreach events + tech tools

## Secondary Schools

- Supervision and guidance to youth volunteers



## PWD & Caregivers

- Shared memories → strengthened bonds



## Technology Partners

- Adobe Photoshop A.I.: Enhanced photos
- 360° cameras: Immersive storytelling

# Results

- Trained 80 youth volunteers from secondary schools
- Produced video stories and wedding album of 30 PWD + 30 caregivers
- Recorded over 1,000 exhibition attendees

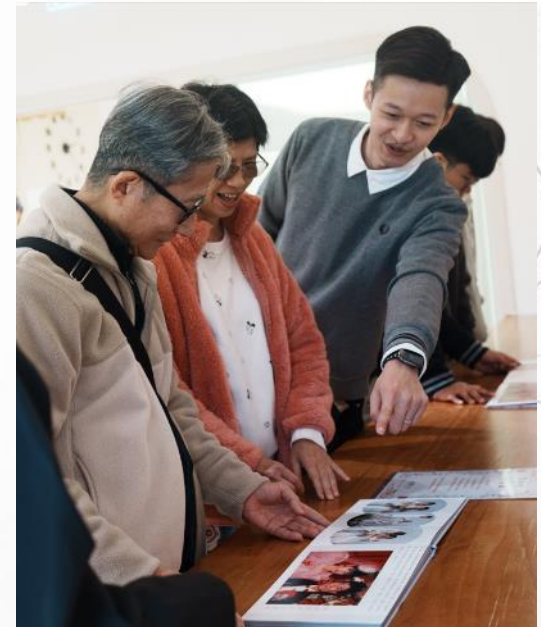
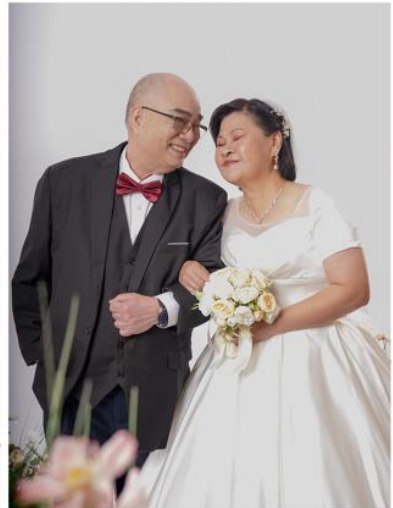


• 青年義工於家訪後，拍攝侯爺與APPLE  
一直以愛互相扶持的背影。



## 婚姻中的理解與包容

- 尊重與成長：Nancy與Tony在婚姻中始終保有獨立的空間與興趣。Nancy熱愛義工活動，重返社區並獲得28週年義工獎；Tony則在事業中不斷追求進步，最終成為一名船長。他們互相尊重彼此的選擇，並鼓勵對方追求夢想。
- 共同的目標：Tony為家庭努力工作，Nancy則在家庭中照顧小孩，他們共同為家庭的幸福奮鬥，並以身作則，為下一代樹立榜樣。



# Impact to PWD and Caregivers: Positive Emotion and Memory

相簿內容節錄了長者的愛情故事及生活智慧。



**PWD:**

*“Oh... that’s me? So young... so happy.”  
“Look at how we smiled... such a beautiful day.”*

**Caregiver:**

*“My father passed away a year after the video was completed. It became the best memory for our family.”*

# Impact to Youth Volunteers: Growth and Transformation

- **Develop Deeper Empathy** by engaging with PWD and caregivers, fostering compassion and social awareness.
- **Build Practical Tech Skills** by learning to use digital tools that support dementia care and community inclusion.
- **Experience Personal Growth** as they become advocates for an inclusive society, gaining leadership and problem-solving abilities.



在參與這個活動前我根本不知道長者也可以和年青人一樣活潑。以前我曾參與不少以長者為主的活動，但大都是服務性的活動如派發飯盒。這個活動讓我看到「老孩子」，他們在接觸新事物時的熱情令我十分驚訝，他們甚至乎比我們更有活力，他們的人生經驗令我獲益良多，新式的科技亦令我大開眼界。這個活動令我知道人是需要多與人接觸及持續學習才能進步。同時這個活動亦令我看到愛情的美好，不是一種轟轟烈烈的感情，卻是一種細水長流的感覺，我很喜歡Ben同Yvonne相處的氣氛，總括而言這個活動很有意義。——青年義工 Candice 阿桐

自從參加了耆青活動，認識和了解Apple侯爺之後，我有兩種感受，一種是震撼，另一種是暖心。震撼的地方在於他們一生累積的人生經驗和智慧，Apple參與的活動範疇很多，直到今天仍然持續學習，而侯爺海陸空都曾經接觸過，聽起來都很遙不可及，令我有種想法，希望努力去做到像他們一樣成功的人，現在的我在他們眼中或許只是一隻井底蛙吧，哈哈。暖心的感覺，在於他們每一句毫無保留的分享，聽起來讓人舒服，他們的那些勸勉和告誡都是真心為年輕人設想，令你走少一些冤枉路，很感激。——青年義工 SAM

# Impact to Hospital: Strengthening Sustainable Support for PWD and Caregivers



**BUILD A SUSTAINABLE  
COLLABORATION NETWORK**



**DELIVER CONTINUOUS &  
ADAPTIVE SUPPORT SERVICES**



**EMPOWER THE COMMUNITY  
FOR LONG-TERM IMPACT**

# Impact to Community: Ripple Effect

- **Raise public awareness** about the challenges faced by individuals living with dementia and their caregivers.
- Foster a **dementia-friendly mindset** by encouraging empathy, education, and proactive support within the community.
- Create an **inclusive society** where people with dementia feel understood, valued, and empowered to live with dignity.



# Why It Works?

## The Innovation Triangle: Powering Dementia Care's Future



Harnessing the synergy of:

- **Youth Energy** – Fresh perspectives & digital fluency
- **Clinical Expertise** – Evidence-based care strategies
- **A.I. Precision** – Smart tools for personalized support

A scalable model designed for:

- **Schools** – Dementia awareness programs & intergenerational learning
- **Hospital** – Enhanced caregiver support & patient engagement
- **Communities** – Replicable frameworks for global impact

# Challenges & Lessons



## Challenges



### Engagement Barriers:

Recruiting and retaining youth volunteers and PWD participants due to time constraints and stigma.



### Tech Complexity:

Balancing A.I. tools with human-centric care, requiring training for volunteers and sensitivity to PWD comfort levels.

## Lessons



### Synergy Wins:

Combining youth energy, clinical expertise, and A.I. personalization creates transformative care experiences.



### Adaptability is Key:

Flexible formats (e.g., shorter sessions) and community exhibitions maximize engagement and awareness.

# Future Development

Area	Content
<b>Scale &amp; Replicate</b>	<ul style="list-style-type: none"><li>• Expand youth volunteer programs to more clusters &amp; schools with standardized training</li><li>• Adapt the model for diverse communities and care settings</li></ul>
<b>Tech Innovation</b>	<ul style="list-style-type: none"><li>• Integrate user-friendly A.I./VR tools to enhance reminiscence therapy</li><li>• Develop digital platforms for remote participation and resource sharing</li></ul>
<b>Sustainable Ecosystems</b>	<ul style="list-style-type: none"><li>• Strengthen medical social collaboration (healthcare, NGOs, schools) for services implementation</li></ul>
<b>Research &amp; Impact</b>	<ul style="list-style-type: none"><li>• Conduct longitudinal studies to measure long-term benefits for PWD, caregivers, and youth</li><li>• Share findings to advance global dementia care innovation</li></ul>

# Conclusion

## Proven Impact

- Demonstrated success in enhancing dementia care through youth-A.I.-clinical collaboration, improving patient well-being and community awareness.

## Scalable Model

- The project's framework is adaptable for broader implementation across clusters and institutions.

## Call to Action

- Urges continued investment in intergenerational programs and tech-integrated dementia care to address growing global needs.



# Thank You